

ACCESSIBILITY - FACILITIES

Americans with Disabilities Act 1991

Chapters 11A and 11B are based on ADA 1991 but also differ from it. For this reason it is crucial to review the state requirements against the federal requirements and always apply the strictest requirement. ADA was updated in 2010 but the changes have not yet been updated by California, however, as law, the new federal statute also applies.

Accessibility Intent

The intent of accessibility is to provide *equal facilitation* to persons with disabilities.

Accessible Facilities

All building facilities shall be accessible except where modified by this section. When multiple facilities are provided, typically only a certain percentage needs to be fully accessible. There are also special provisions for different occupancy types which should be consulted.

SECTION 1104B ACCESSIBILITY FOR GROUP A OCCUPANCIES

1104B.2 Assistive-listening systems in assembly areas. *Assembly areas, conference and meeting rooms shall provide assistive-listening systems for persons with hearing impairments as provided in this section.*

Exception: *This section does not apply to systems used exclusively for paging, or background music, or a combination of these two uses.*

1104B.3 Auditoriums, assembly halls, theaters and related facilities.

1104B.3.1 Seating. *In all assembly places where seating is provided, there shall be spaces for persons using wheelchairs and semi-ambulant persons, as provided in this section.*

1104B.3.2 Accessibility to key facilities. *Seating for persons with disabilities shall be accessible from the main lobby or from a primary entrance, together with related toilet facilities.*

1104B.3.3 Variety of locations. *Accessible seating or accommodations in places of public amusement and resort, including theaters, concert halls and stadiums, shall be provided in a variety of locations so as to provide persons with disabilities a choice of admission prices otherwise available to members of the general public.*

1104B.3.4 Wheelchair spaces.

1. The number of such spaces is as shown in Table 11B-1.

TABLE 11B-1 WHEELCHAIR SEATING SPACES

SEATING CAPACITY	NO. OF WHEELCHAIR SEATING SPACES
<i>4 to 25</i>	<i>1</i>
<i>26 to 50</i>	<i>2</i>
<i>51 to 300</i>	<i>4</i>
<i>301 to 500</i>	<i>6</i>

In addition, 1 percent, but not less than one, of all fixed seats, shall be aisle seats with no armrests on the aisle side, or removable or folding armrests on the aisle side. Each such seat shall be identified by a sign or marker with the International Symbol of Accessibility (see Figure 11B.6). Signage notifying patrons of the availability of such seats shall be posted at the ticket office. Signs and markers shall comply with Section 1117B.5.1, Items 2 and 3, as applicable.

2. When the seating capacity exceeds 500, one additional wheelchair seating space shall be provided for each total seating capacity increase of 100.

3. The ground or floor at spaces shall be level and shall comply with Section 1124B.

1104B.3.5 Placement of wheelchair locations. *Wheelchair areas shall be an integral part of any fixed seating plan, and shall be arranged so as to provide persons with*

disabilities a choice of admission prices and lines of sight comparable to those for members of the general public. Each wheelchair area shall adjoin an accessible route which shall also serve as a means of egress in case of emergency. At least one companion fixed seat shall be provided next to each wheelchair seating area. When the seating capacity exceeds 300, wheelchair spaces shall be provided in more than one location in addition to complying with Section 1104B.3.3.

1104B.5 Dining, banquet and bar facilities.

1. **General.** Dining, banquet and bar facilities shall be made accessible to persons with disabilities as provided in this section. All areas where each type of functional activity occurs shall be made accessible.
2. **Entrance.** Access to these facilities shall be provided at entrances and exits as required by Section 1133B.1.1.
3. **Raised or sunken areas.** All raised or sunken areas, including dining areas, loggias and outdoor seating areas, shall be accessible. A raised platform where a head table or speaker's lectern is located shall be accessible. Open edges of raised or sunken areas shall be protected as required by [Sections 1013](#) Guards, 1133B.8.1 Warning curbs, or by other means as required by this code. For existing buildings, see Section 1120B, Floors and Levels.
4. **Seating.** Each dining, banquet and bar area shall have one wheelchair seating space for each 20 seats, with at least one minimum wheelchair seating space per functional area. Such seating shall be designed and arranged to permit use by wheelchair occupants, and shall comply with Section 1122B, Fixed or Built-in Seating, Tables and Counters. Access to such seating spaces shall be provided with main aisles not less than 36 inches (914 mm) clear width. In establishments where separate areas are designated for smoking and nonsmoking patrons, the required number of accessible fixed tables (or counters) shall be proportionally distributed between the smoking and nonsmoking areas. Accessible seating spaces shall be integrated with general seating to allow a reasonable selection of seating area and to avoid having one area specifically highlighted as the area for persons with disabilities. The ratio of accessible seating is based on the total number of seats provided. Where food or drink is served at counters exceeding 34 inches (865 mm) in height for consumption by customers seated or standing at the counter, a portion of the main counter which is 60 inches (1525 mm) in length minimum shall be provided in compliance with Section 1122B.
5. **Food service aisles.** Food service aisles shall be a minimum of 36 inches (914 mm) of clear width with a preferred width of 42 inches (1067 mm) where passage of stopped wheelchairs by pedestrians is desired. Tray slides shall be mounted no higher than 34 inches (864 mm) above the floor as shown in Figure 11B-16. If self-service shelves are provided, at least 50 percent of each type must be within the reach ranges in Sections 1118B.5 and 1118B.6.
6. **Tableware and condiment areas.** Self-service tableware, dishware, condiments, food and beverage display shelves and dispensing devices shall comply with Sections 1118B and 1122B.4. See Figure 11B-17.
7. **Restrooms.** Restrooms and powder rooms shall conform to the requirements in Section 1115B.

8. **Food preparation areas.** Access to food preparation areas shall comply with the provisions for entrance doors and doorways in [Section 1008](#), and aisles in [Sections 1017](#) and [1017.2](#).

SECTION 1105B ACCESSIBILITY FOR GROUP B OCCUPANCIES

Group B occupancies shall be accessible as provided in this chapter. See also the general requirements in Section 1114B.1.1.

SECTION 1106B ACCESSIBILITY FOR GROUP E OCCUPANCIES

1106B.2 Laboratory rooms. Laboratory rooms shall have at least one workstation and at least 5 percent of all workstations accessible to and usable by persons with disabilities in compliance with Section 1118B, Space Allowance and Reach Ranges, and Section 1122B, Fixed or Built-in Seating, Tables and Counters.

1106B.3 Teaching facility cubicles, study carrels, etc. Teaching facility cubicles, study carrels, etc., shall have 5 percent, but always at least one cubicle or carrel in each group (language, dental, audiovisual, typing, drafting, darkrooms, etc.) made accessible to and usable by persons with disabilities in compliance with Section 1118B, Space Allowance and Reach Ranges, and Section 1122B, Fixed or Built-in Seating, Tables and Counters.

1106B.4 Library general use areas.

SECTION 1107B FACTORIES AND WAREHOUSES

1107B.2 Warehouses.

1. Miscellaneous warehousing areas which are located on the floor nearest grade and those areas on other floors that are otherwise provided with access by level entry, ramp or elevator shall be made accessible.
2. Office areas shall be made accessible.
3. Sanitary facilities serving these areas shall be made accessible.

SECTION 1108B ACCESSIBILITY FOR GROUP H OCCUPANCIES

1108B.1 General. Group H occupancies shall be accessible as provided in this chapter. See also the general requirements in Section 1114B.1.1.

SECTION 1109B ACCESSIBILITY FOR GROUP I OCCUPANCIES

1109B.3 Patient bedrooms and toilet rooms. Patient bedrooms and associated toilet facilities shall be made accessible as follows:

1. Long-term care facilities, including skilled nursing facilities, intermediate care facilities, bed and care and nursing homes shall have at least 50 percent of patient bedrooms and toilet rooms, and all public use and common use areas, accessible.

2. General-purpose hospitals, psychiatric facilities and detoxification facilities shall have at least 10 percent of patient bedrooms and toilets, and all public use and common use areas, accessible.

3. Hospitals and rehabilitation facilities that specialize in treating conditions that affect mobility, or units within either that specialize in treating conditions that affect mobility, shall have all patient bedrooms and toilets and all public use and common use areas accessible.

1109B.4 Patient bedroom areas. Accessible patient bedrooms shall comply with the following requirements:

1. Each bedroom shall have a turning space measuring 60 inches (1524 mm) clear in diameter, or that is a T-shaped space complying with Figure 11B-12. In rooms with two beds, it is preferable that this space be located between beds.

2. Each bedroom shall have a minimum clear floor space of 36 inches (914 mm) along each side of the bed, and shall provide an accessible route to each side of the bed.

3. Each bedroom shall have an accessible door that complies with Section 1133B.2.

1109B.6 Diagnostic and treatment areas. Diagnostic and treatment areas and, where applicable, at least one dressing room, sanitary facility, etc., for each unit or suite shall be made accessible.

SECTION 1110B ACCESSIBILITY FOR GROUP M OCCUPANCIES

1110B.1 Sales.

1110B.1.2 Work areas. Sales employee workstations shall be located on accessible levels, and the customer side of sales or check-out stations shall be accessible. Employee work areas shall be sized and arranged to provide access to employees in wheelchairs.

1110B.1.3 Check stands. Where check stands are provided, the minimum number of check stands that are accessible shall be as shown in Table 11B-2. When not all check stands are accessible, accessible check stands shall be identified by a sign clearly visible to a person in a wheelchair displaying the International Symbol of Accessibility complying with Section 1117B.5.8. The sign shall be a minimum of 4 inches by 4 inches (102 mm by 102 mm). When check stands are open for customer use, a minimum of one accessible check stand shall always be available. As check stands are opened and closed based on fluctuating customer levels, the number of accessible check stands available shall comply with Table 11B-2.

TABLE 11B-2 CHECK STANDS

TOTAL NUMBER OF CHECK STANDS OF EACH DESIGN	MINIMUM NUMBER OF CHECK STANDS OF EACH DESIGN TO BE ACCESSIBLE
<i>1 to 4</i>	<i>1</i>
<i>5 to 8</i>	<i>2</i>
<i>9 to 15</i>	<i>3</i>
<i>over 15</i>	<i>3 plus 20% of additional aisles</i>

1110B.1.6 Theft prevention barriers.

1110B.2 Miscellaneous general standards.

1110B.2.1 Circulation. Shelves or display units allowing self-service by customers in mercantile occupancies shall be located on an accessible route of travel complying with Section 1114B.1.2. Circulation aisles and pedestrian ways shall be sized according to functional requirements and in no case shall be less than 36 inches (914 mm) in clear width.

SECTION 1111B ACCESSIBILITY FOR GROUP R OCCUPANCIES

1111B.2 Public and common use rooms or areas. Public- and common use rooms and similar areas shall be made accessible to persons with disabilities, subject to specific provisions contained in other portions of these regulations.

At least one of each type of amenity (such as washers, dryers and similar equipment installed for the use of occupants) in each common area shall be accessible and shall be located on an accessible route to any accessible unit or sleeping accommodation.

111B.4 Hotels, motels, inns, dormitories, resorts, homeless shelters, halfway houses, transient group homes and similar places of transient lodging.

1111B.4.1 Available range of accommodations. Accessible guest rooms or suites shall be dispersed among the various classes of sleeping accommodations to provide a range of options applicable to room sizes, costs, amenities provided and the number of beds provided.

1111B.4.2 Guest rooms and suites. Places of transient lodging shall incorporate the accessibility requirements of this code as modified by this chapter in at least one guest room or dormitory room together with their sanitary facilities as required in Table **11B-3**. All accessible sleeping rooms or suites required by Table 11B-3 shall comply with the requirements of Section 1111B.4.5 for hearing impaired guests.

1111B.4.2.4 Alterations in existing facilities. When guest rooms are being altered in an existing facility, or portion thereof, subject to the requirements of this section, at least one guest room or suite that complies with the accessibility requirements of this code as modified by this chapter shall be provided for each 25 guest rooms, or fraction thereof, of rooms being altered until the number of such rooms provided equals the number required to be accessible in Table 11B-3. In addition, at least one guest room or suite that complies with the requirements of Section 1111B.4.5 shall be provided for each 25 guest rooms, or fraction thereof, of rooms being altered until the number of such rooms equals the number required to be accessible in Table 11B-4.

1111B.4.3 Access to beds. Accessible sleeping rooms shall have a 36-inch (914 mm) clear width maneuvering space located along both sides of a bed, except that where two beds are provided, this requirement can be met by providing a 36-inch-wide (914 mm) maneuvering space located between the beds.

In addition, there shall be a clear space under the bed for the use of a personal lift device. The clear space shall be on a long side of the bed adjacent to an accessible aisle. The clear space shall extend horizontally to points not more than 12 inches (305 mm) from each end of the bed, vertically not less than 7 inches (178 mm), and not less than 30 inches (762 mm) deep.

TABLE 11B-3 ADDITIONAL ACCESSIBILITY REQUIRED IN GUEST ROOMS OR SUITES*

TOTAL NUMBER OF ROOMS	FULLY ACCESSIBLE ROOMS	PLUS ADDITIONAL ACCESSIBLE ROOMS WITH ROLL-IN SHOWERS
<i>1 to 25</i>	<i>0</i>	<i>1</i>
<i>26 to 50</i>	<i>1</i>	<i>1</i>
<i>51 to 75</i>	<i>3</i>	<i>1</i>
<i>76 to 100</i>	<i>4</i>	<i>1</i>
<i>101 to 150</i>	<i>5</i>	<i>2</i>
<i>151 to 200</i>	<i>6</i>	<i>2</i>
<i>201 to 300</i>	<i>7</i>	<i>3</i>
<i>301 to 400</i>	<i>8</i>	<i>4</i>
<i>401 to 500</i>	<i>9</i>	<i>4 plus 1 for each additional 100 over 400</i>
<i>501 to 1,000</i>	<i>2% of total</i>	<i>4 plus 1 for each additional 100 over 400</i>
<i>1,001 and over</i>	<i>20 plus 1 for each 100 over 1,000</i>	

**Provisions of this chapter are additional modifications to general requirements listed in Section 1114B.1.1.*

TABLE 11B-4 ADDITIONAL ACCESSIBILITY REQUIRED FOR HEARING IMPAIRED IN GUEST ROOMS*

<i>TOTAL NUMBER OF ROOMS</i>	<i>NUMBER OF ROOMS EQUIPPED FOR HEARING IMPAIRED</i>
<i>1 to 25</i>	<i>1</i>
<i>26 to 50</i>	<i>2</i>
<i>51 to 75</i>	<i>3</i>
<i>76 to 100</i>	<i>4</i>
<i>101 to 150</i>	<i>5</i>
<i>151 to 200</i>	<i>6</i>
<i>201 to 300</i>	<i>7</i>
<i>301 to 400</i>	<i>8</i>
<i>401 to 500</i>	<i>9</i>
<i>501 to 1,000</i>	<i>2% of total</i>
<i>1,001 and over</i>	<i>20 plus 1 for each 100 over 1,000</i>

1111B.5.1 General. Buildings and complexes containing publicly funded dwelling units shall be accessible as required by [Chapter 11A](#), Housing Accessibility, except that scoping requirements for covered multifamily dwellings include one or more publicly funded dwelling units, and are required to comply with Division IV-Accessibility for Existing Buildings, beginning with Section 1134B.

SECTION 1115B BATHING AND TOILET FACILITIES (SANITARY FACILITIES)

1115B.1 General. Bathing and toilet facilities that serve buildings, facilities or portions of buildings or facilities that are required by these standards to be accessible to persons with disabilities, shall be on an accessible route and shall conform to the following requirements.

1115B.1.1 Separate and unisex facilities. Where separate facilities are provided for persons of each sex, these facilities shall be accessible to persons with disabilities. Where unisex facilities are provided, these facilities shall be accessible to persons with disabilities.

1115B.1.2 Where used by children. Where facilities are to be used solely by small children, the specific heights and clearances may be adjusted to meet their accessibility needs. See Table 1115B-1 for suggested mounting heights and clearances.

1115B.2 Bathing and shower facilities. Where facilities for bathing are provided for the public, clients or employees, including showers or bathtubs, at least one shower or bathtub and support facilities such as lockers, and not less than 1 percent of all facilities, shall be accessible.

1115B.3 Toilet facilities.

1115B.3.1 Multiple-accommodation toilet facilities. *Multiple-accommodation toilet facilities shall have the following:*

3. Accessible fixtures. *Provide a minimum of one accessible water closet in compliance with Section 1115B.4.1. At least 5 percent of lavatories, but not less than one lavatory, shall be accessible in compliance with Section 1115B.4.3.*

5. Large toilet rooms. *Where six or more compartments are provided within a multiple-accommodation toilet room, in addition to the water closet and compartment required by Items 3 and 4 above, provide at least one ambulatory accessible compartment. The ambulatory accessible compartment shall be 36 inches (914 mm) wide with an outward swinging self-closing door and parallel grab bars complying with Section 1115B.4.1, Item 3.*

1115B.3.2 Single-accommodation toilet facilities.

1115B.4 Accessible fixtures.

1115B.4.1 Accessible water closets.

1115B.4.2 Accessible urinals. Urinals required to be accessible shall comply with this subsection.

1. Urinals shall be floor mounted, stall-type or wall hung. Where one or more wall-hung urinals are provided, at least one with an elongated rim projecting a minimum of 14

inches (356 mm) from the wall and a maximum of 17 inches (432 mm) from the wall and a maximum of 17 inches (432 mm) above the floor shall be provided.

2. Flush controls shall be operable with one hand and shall not require tight grasping, pinching or twisting of the wrist and shall be mounted no more than 44 inches (1118 mm) above the floor. The force required to activate controls shall be no greater than 5 lbf (22.2 N). Electronic automatic flushing controls are acceptable and preferable.

3. Where urinals are provided, at least one shall have a clear floor space 30 inches by 48 inches (762 mm by 1219 mm) in front of the urinal to allow forward approach. This clear space shall comply with Section 1118B.4.

1115B.4.3 Accessible lavatories. Lavatories required to be accessible shall comply with this subsection. The requirements of this subsection shall apply to lavatory fixtures, vanities and built-in lavatories.

1. Faucet controls and operating mechanisms shall be operable with one hand in accordance with this chapter and shall not require tight grasping, pinching or twisting of the wrist. The force required to activate controls shall be no greater than 5 lbf(22.2 N). Lever-operated, push-type and electronically controlled mechanisms (preferable) are examples of acceptable designs. Self-closing valves are allowed if the faucet remains open for at least 10 seconds.

2. Lavatories, when located adjacent to a side wall or partition, shall be a minimum of 18 inches (457 mm) to the centerline of the fixture. All lavatories that are designated to be accessible shall be a minimum 17 inches (432 mm) in horizontal depth and mounted with the rim or counter edge no higher than 34 inches (864 mm) above the finished floor and with vertical clearance measured from the bottom of the apron or the outside bottom edge of the lavatory of 29 inches (737 mm) reducing to 27 inches (686 mm) at a point located 8 inches (203 mm) back from the front edge. In addition, a minimum 9-inch-high (230 mm) toe clearance must be provided extending back toward the wall to a distance no more than 6 inches (150 mm) from the back wall. The toe clearance space must be free of equipment or obstructions.

3. A clear floor space 30 inches by 48 inches (762 mm by 1219 mm) complying with Section 1118B.4 shall be provided in front of a lavatory to allow forward approach. Such clear floor space shall adjoin or overlap an accessible route and shall extend a maximum of 19 inches (483 mm) into knee and toe space underneath the lavatory. See Figure 11B-1D, Knee Clearance.

4. Hot water and drainpipes accessible under lavatories shall be insulated or otherwise covered. There shall be no sharp or abrasive surfaces under lavatories.

1115B.4.4 Accessible showers. Showers required to be accessible shall comply with this subsection:

1115B.4.5 Accessible bathtubs. Bathtubs required to be accessible shall comply with this subsection.

1115B.5 Passageways. Passageways leading to sanitary facilities shall have a clear access. All doorways leading to such sanitary facilities shall comply with Section

1133B.2, Doors. Doors shall not swing into the clear floor space required for any fixture. Accessible fixtures and controls shall be on an accessible route.

1115B.6 Identification symbols. Doorways leading to sanitary facilities shall be identified by a geometric symbol in compliance with this section. Geometric symbols shall be centered horizontally on the door at a height of 60 inches (1524 mm) above the finish floor or ground surface measured to the center of the symbol. Edges of signs shall be rounded, chamfered or eased. Corners of signs shall have a minimum radius of $\frac{1}{8}$ inch (3.2mm). *See Section 1117B.5.1, Item 1 for additional signage requirements applicable to sanitary facilities.*

1115B.8 Accessories.

1115B.8.1 Mirrors.

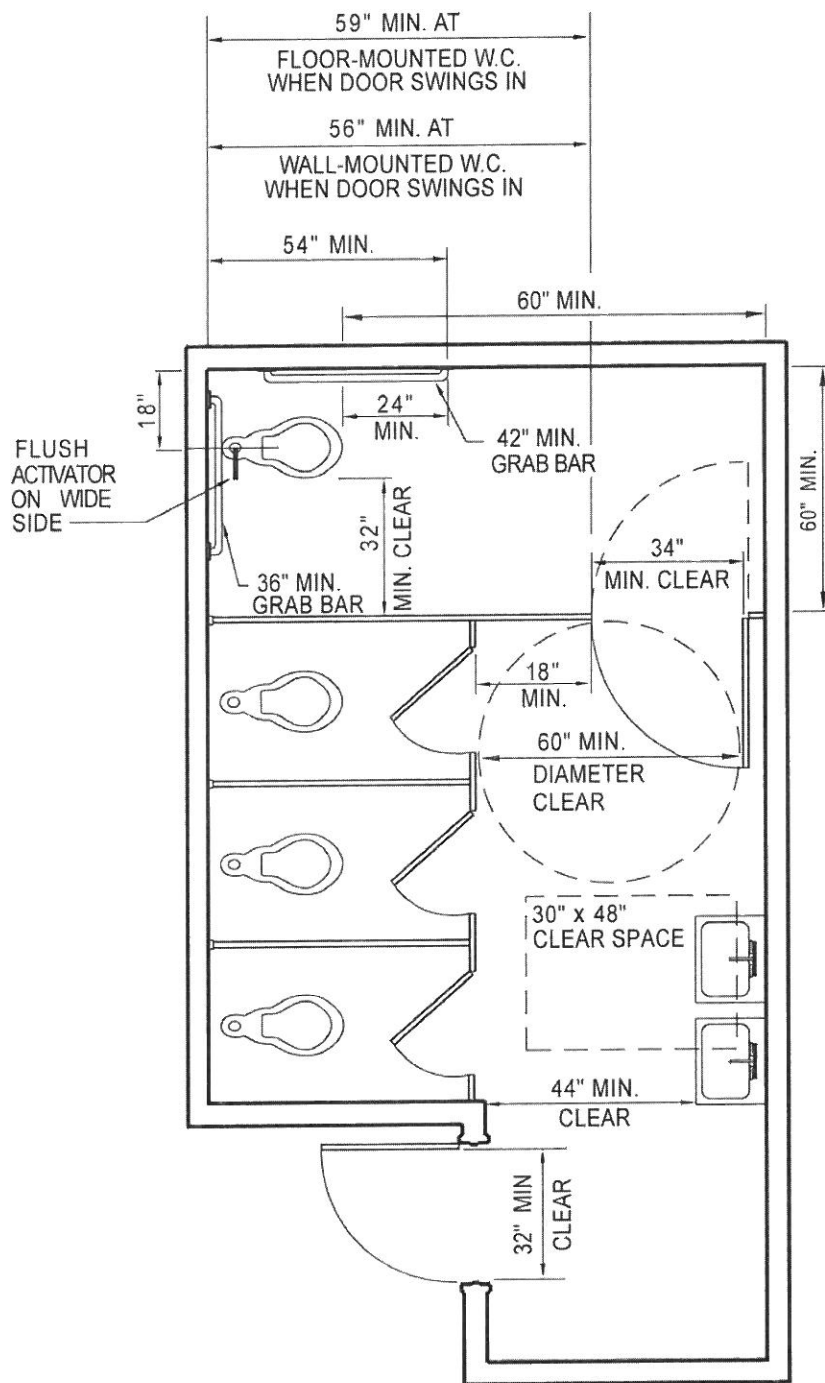
s1115B.8.1.1 All mirrors located above accessible lavatories or countertops shall be installed with the bottom edge of the reflecting surface 40 inches (1016 mm) maximum above the finish floor or ground.

1115B.8.1.2 When mirrors are provided at locations other than above lavatories or countertops, at least one shall be installed with the bottom edge of the reflecting surface 35 inches (890 mm) maximum above the finish floor or ground.

1115B.8.3 Towel, sanitary napkins, waste receptacles, dispensers and controls.

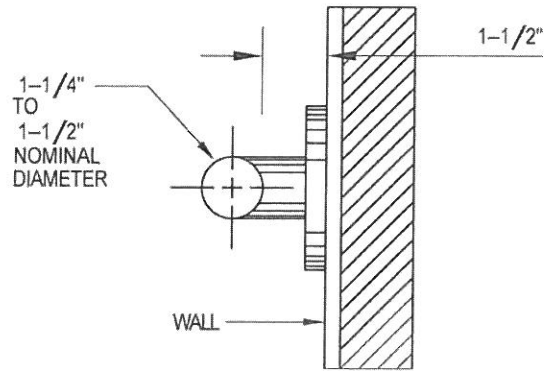
Where towel, sanitary napkins, waste receptacles, dispensers, other equipment and controls are provided, at least one of each type shall be located on an accessible route, with all operable parts, including coin slots, within 40 inches (1016 mm) from the finished floor and shall comply with Section 1117B.6, Controls and operating mechanisms.

1115B.8.5 Lockers. Where lockers are provided for the public, clients, employees, members or participants, at least one locker and not less than 1 percent of all lockers shall be made accessible to persons with disabilities. A path of travel not less than 36 inches (914 mm) in clear width shall be provided to these lockers.



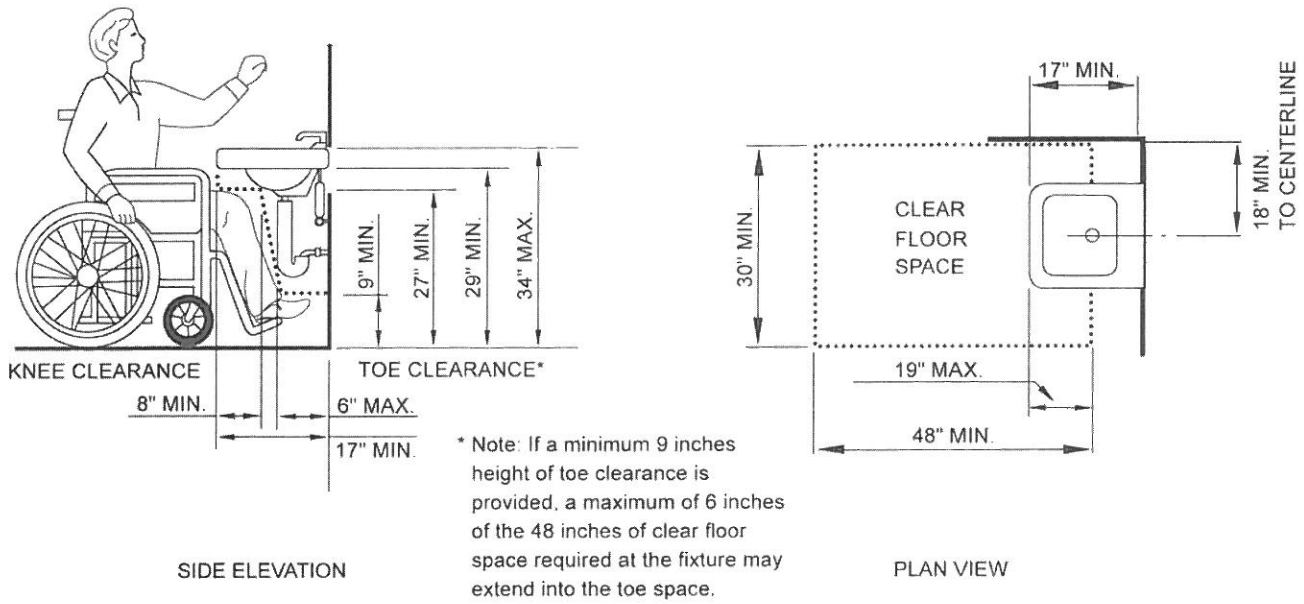
THIS DIAGRAM ILLUSTRATES THE SPECIFIC REQUIREMENTS OF THESE REGULATIONS AND IS INTENDED ONLY AS AN AID FOR BUILDING DESIGN AND CONSTRUCTION

FIGURE 11B-1B—MULTIPLE-ACCOMMODATION TOILET FACILITY



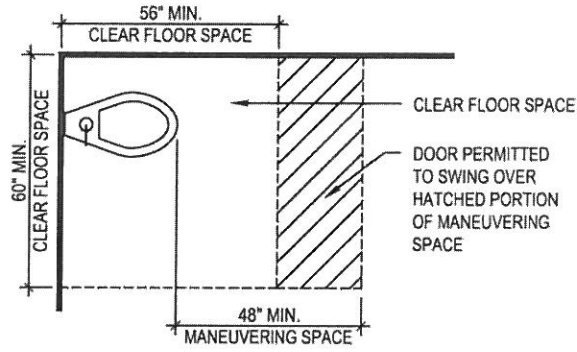
THIS DIAGRAM ILLUSTRATES THE SPECIFIC REQUIREMENTS OF THESE REGULATIONS AND IS INTENDED ONLY AS AN AID FOR BUILDING DESIGN AND CONSTRUCTION

FIGURE 11B-1C—TYPICAL GRAB BAR SECTION

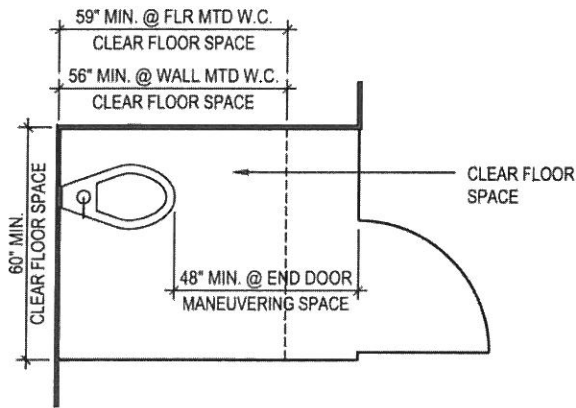


THESE DIAGRAMS ILLUSTRATE THE SPECIFIC REQUIREMENTS OF THESE REGULATIONS AND ARE INTENDED ONLY AS AN AID FOR BUILDING DESIGN AND CONSTRUCTION.

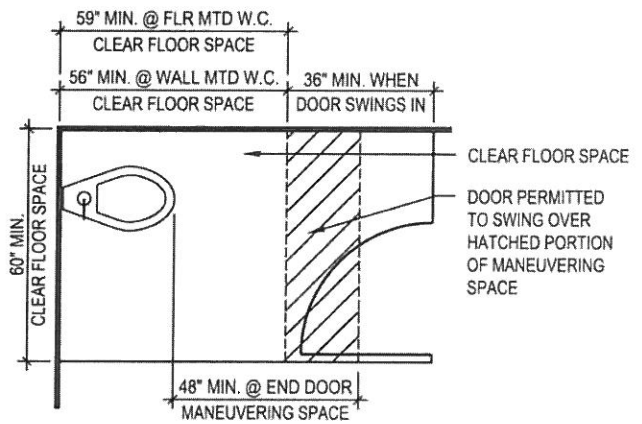
FIGURE 11B-1D—KNEE CLEARANCE



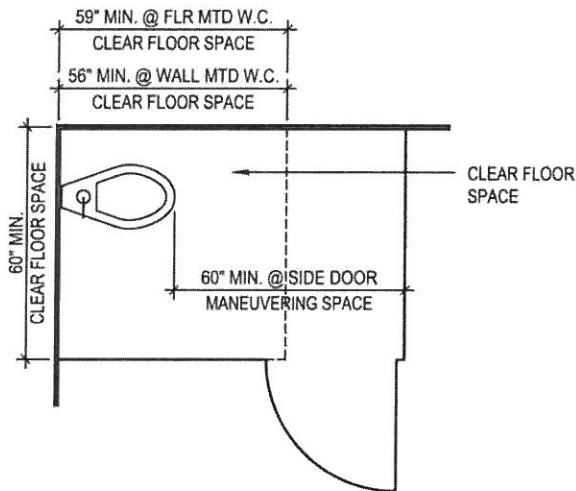
(a) CLEARANCES AT WATER CLOSET



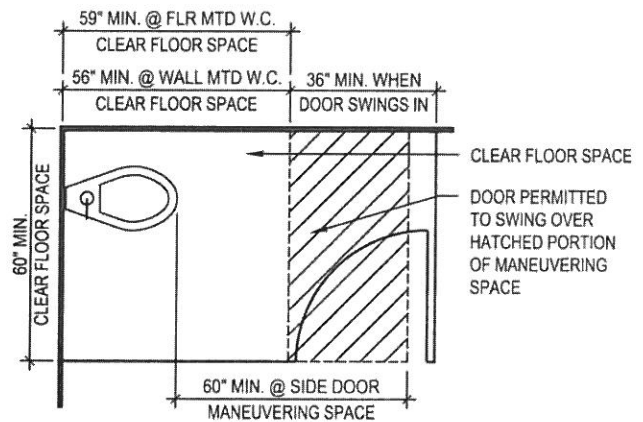
(b) CLEARANCES AT WATER CLOSET IN COMPARTMENT WITH OUT-SWINGING END-OPENING DOOR



(c) CLEARANCES AT WATER CLOSET IN COMPARTMENT WITH IN-SWINGING END-OPENING DOOR



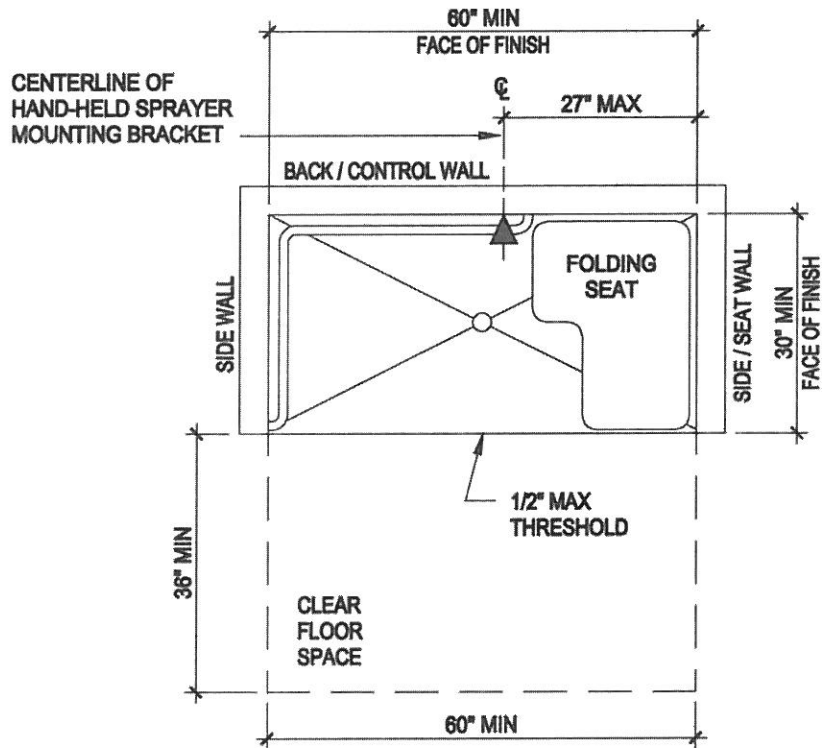
(d) CLEARANCES AT WATER CLOSET IN COMPARTMENT WITH OUT-SWINGING SIDE-OPENING DOOR



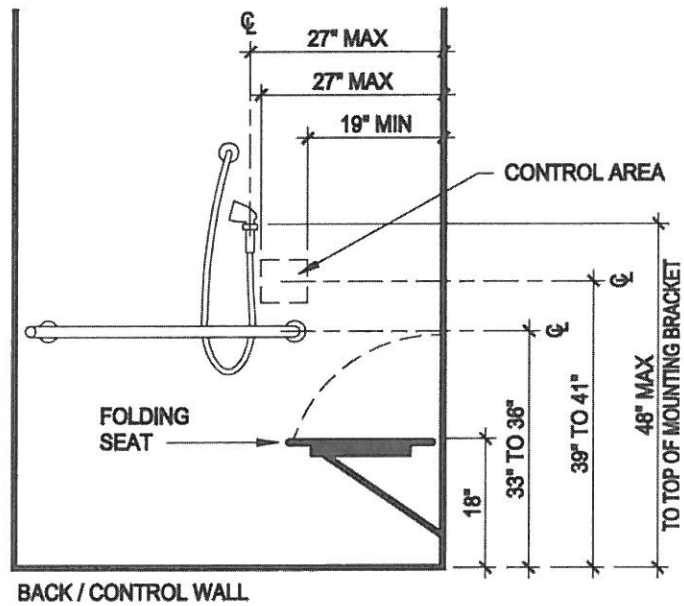
(e) CLEARANCES AT WATER CLOSET IN COMPARTMENT WITH IN-SWINGING SIDE-OPENING DOOR

NOTE: SEE SECTION 1115B.3.1, ITEM 4.5 FOR COMPARTMENT DOOR MANEUVERING SPACE REQUIREMENTS

FIGURE 11B-1E—CLEARANCES AT WATER CLOSETS



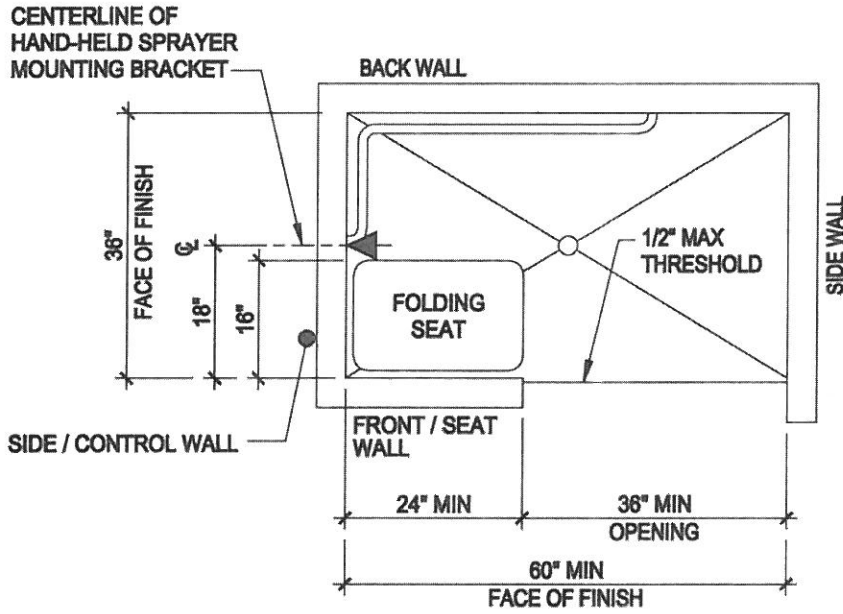
(a) 60" MINIMUM X 30" MINIMUM ROLL-IN SHOWER



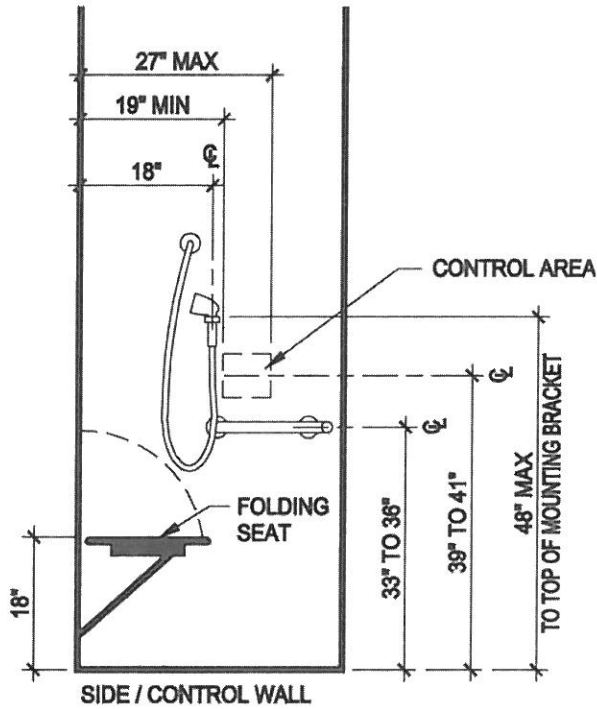
(b) ELEVATION - 60" MINIMUM X 30" MINIMUM ROLL-IN SHOWER

FIGURE 11B-2A—SHOWER STALLS

(continued)

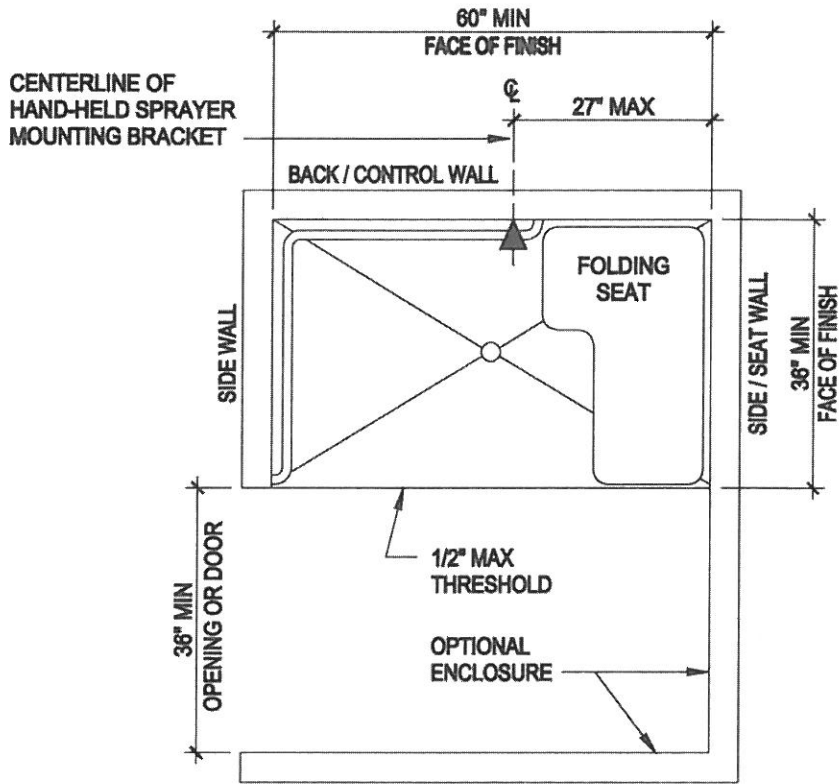


(a) 60" MINIMUM X 36" ALTERNATE ROLL-IN SHOWER

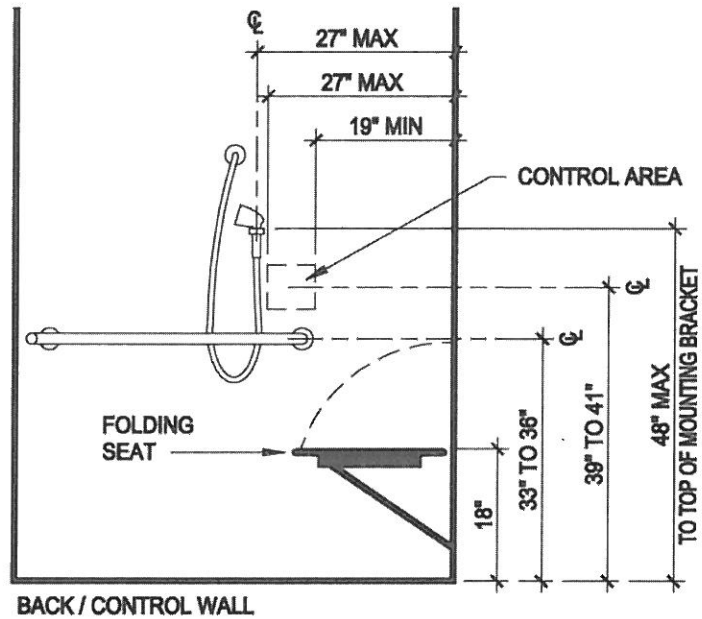


(b) ELEVATION - 60" MINIMUM X 36" ALTERNATE ROLL-IN SHOWER

FIGURE 11B-2B—SHOWER STALLS—continued



(a) 60" MINIMUM X 36" MINIMUM ALTERNATE ROLL-IN SHOWER WITH OPTIONAL ENCLOSURE



(b) ELEVATION - 60" MINIMUM X 36" MINIMUM ALTERNATE ROLL-IN SHOWER WITH OPTIONAL ENCLOSURE

FIGURE 11B-2C—SHOWER STALLS—continued

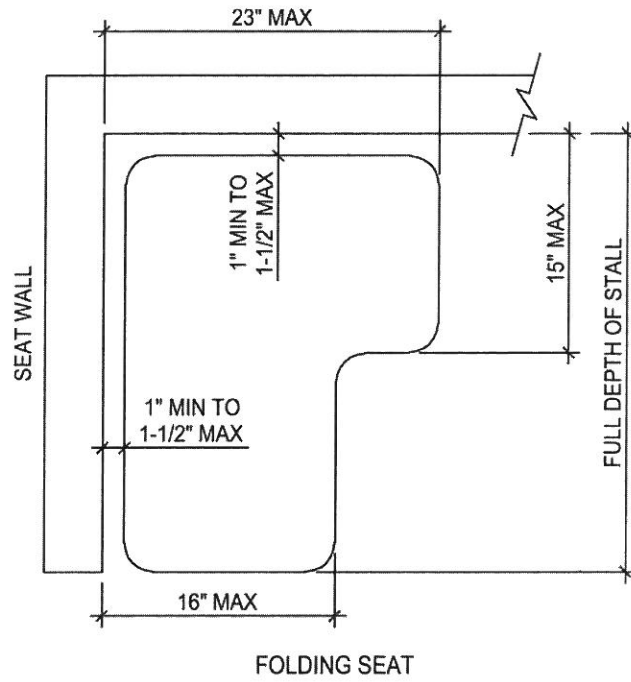
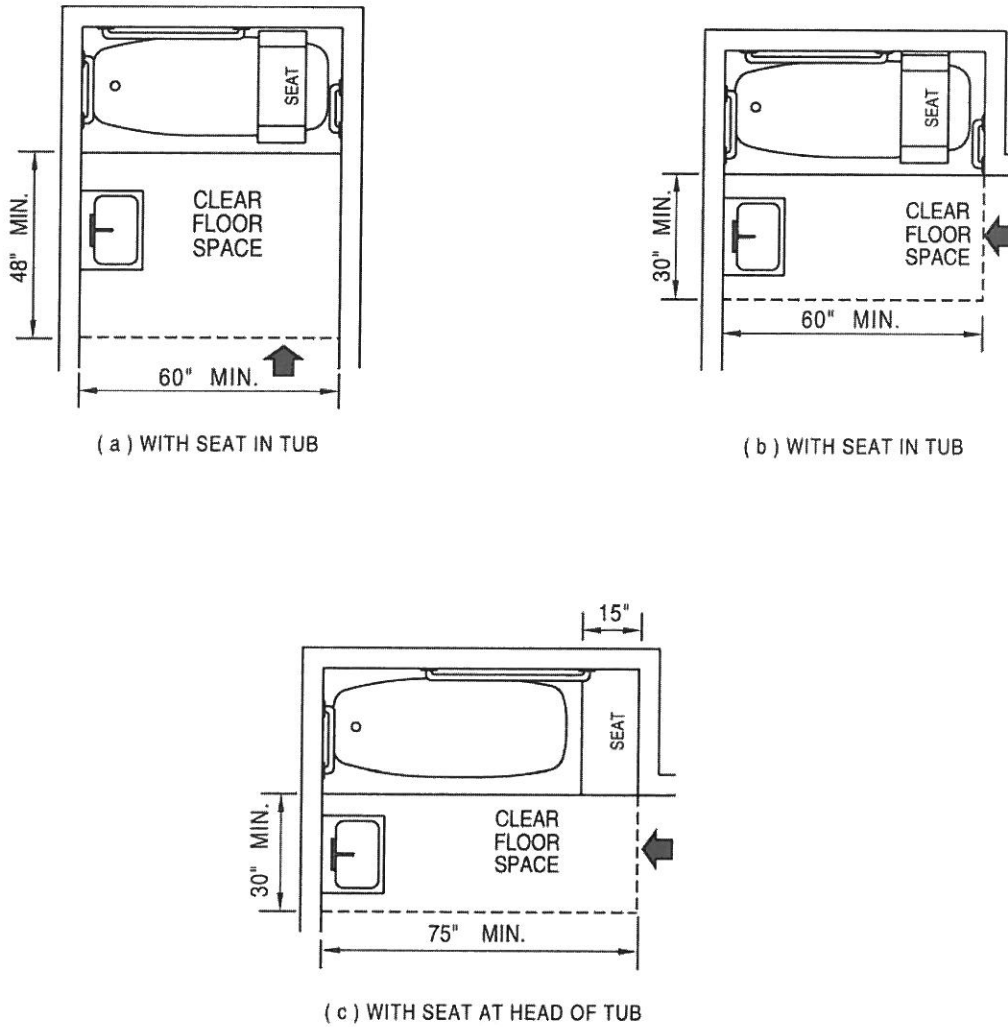
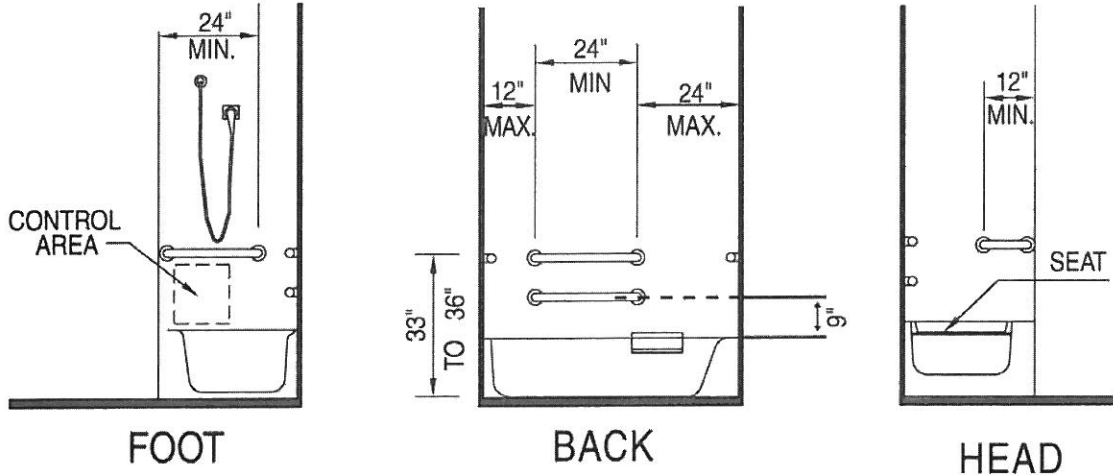


FIGURE 11B-2D—SHOWER SEAT

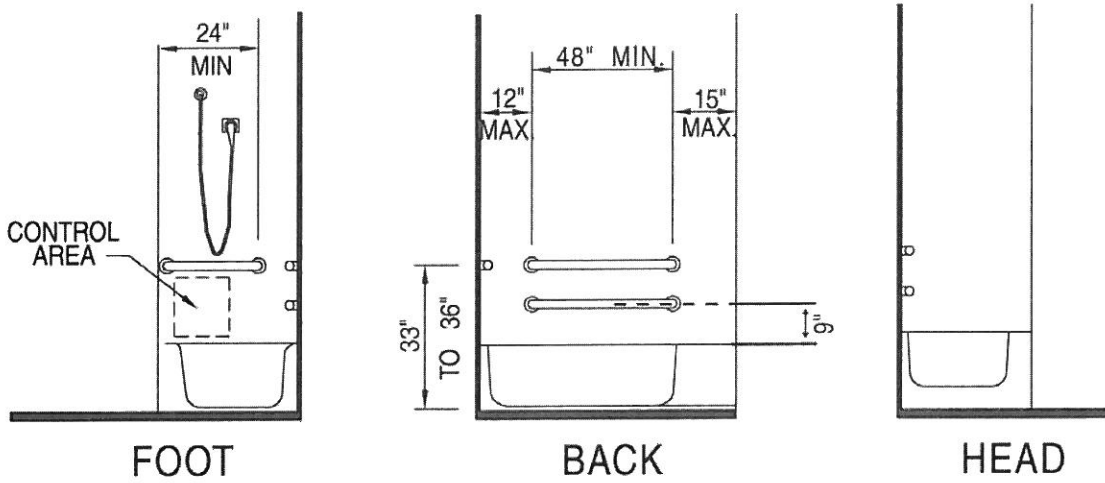


THESE DIAGRAMS ILLUSTRATE THE SPECIFIC REQUIREMENTS OF THESE REGULATIONS AND ARE INTENDED ONLY AS AN AID FOR BUILDING DESIGN AND CONSTRUCTION.

FIGURE 11B-8—CLEAR FLOOR SPACE AT BATHTUBS



(a) WITH SEAT IN TUB



(b) WITH SEAT AT HEAD OF TUB

THESE DIAGRAMS ILLUSTRATE THE SPECIFIC REQUIREMENTS OF THESE REGULATIONS AND ARE INTENDED ONLY AS AN AID FOR BUILDING DESIGN AND CONSTRUCTION.

FIGURE 11B-9—GRAB BARS AT BATHTUBS

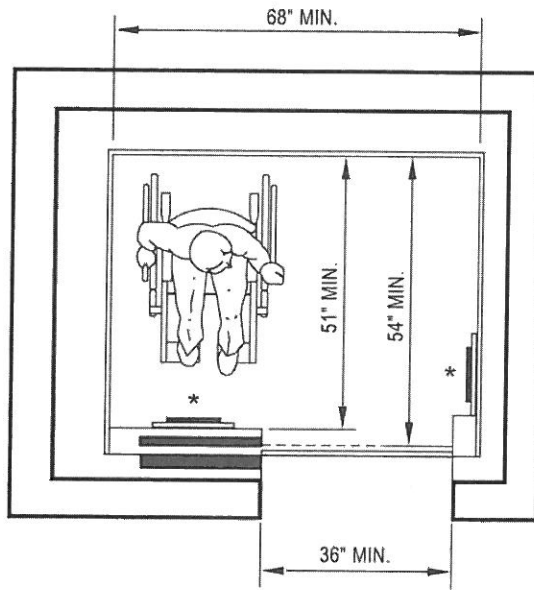
1116B.1 Elevators. Passenger elevators shall be accessible. Elevators required to be accessible shall be designed and constructed to comply with this section and with ASME A17.1, Safety Code for Elevators and Escalators. Freight elevators shall not be considered as meeting the requirements of this section unless the only elevators provided are used as combination passenger and freight elevators for the public and employees.

1116B.2 Platform (wheelchair) lifts.

Platform (wheelchair) lifts may be provided as part of an accessible route only for the following conditions:

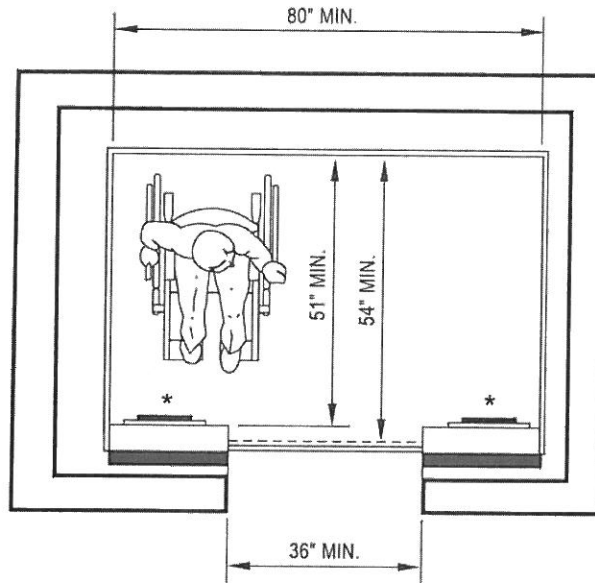
1. To provide an accessible route to a performing area in an assembly occupancy, or to a speaking area or similar place (such as a dais or "head table") in an assembly or Group B occupancy.
2. To comply with the wheelchair viewing position line-of-sight and dispersion requirements of Section 1104B.3.5.
3. To provide access to incidental occupiable spaces and rooms which are not open to the general public and which house no more than five persons, including, but not limited to, equipment control rooms and projection booths.
4. To provide access where existing site constraints or other constraints make use of a ramp or an elevator infeasible.

* ALTERNATE LOCATION
OF PANEL WITH SIDE-
OPENING DOOR



(a) SIDE OPENING DOOR

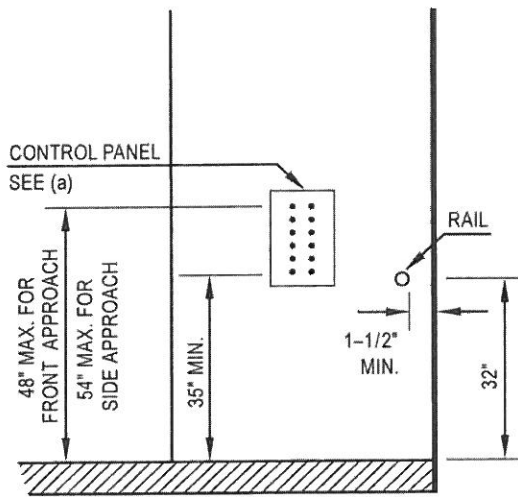
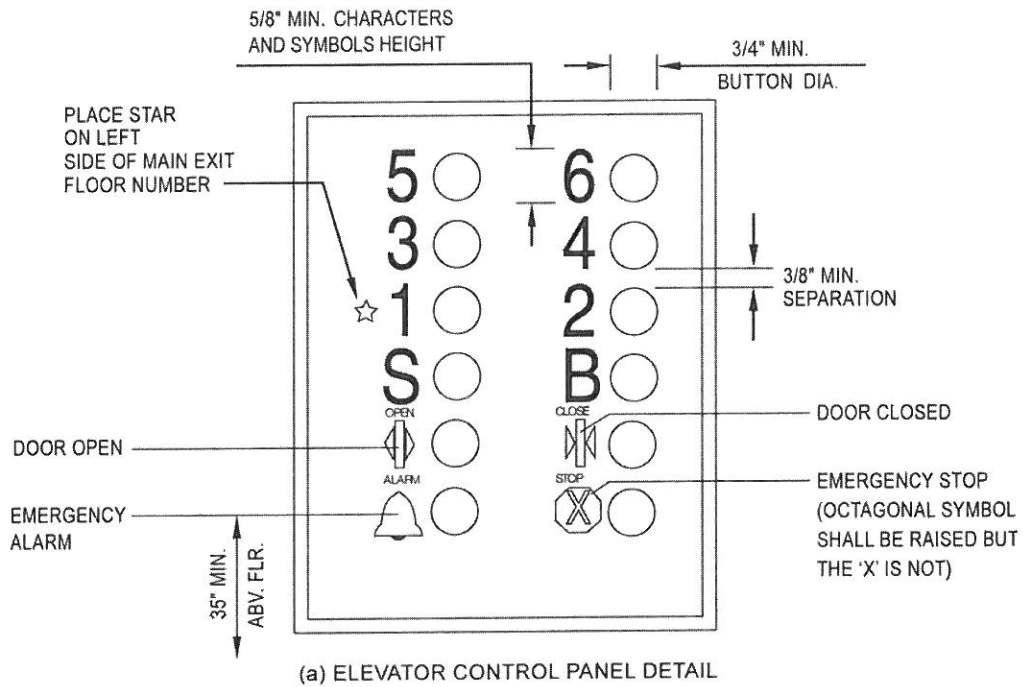
* ALTERNATE LOCATION
OF PANEL WITH CENTER-
OPENING DOOR



(b) CENTER OPENING DOOR

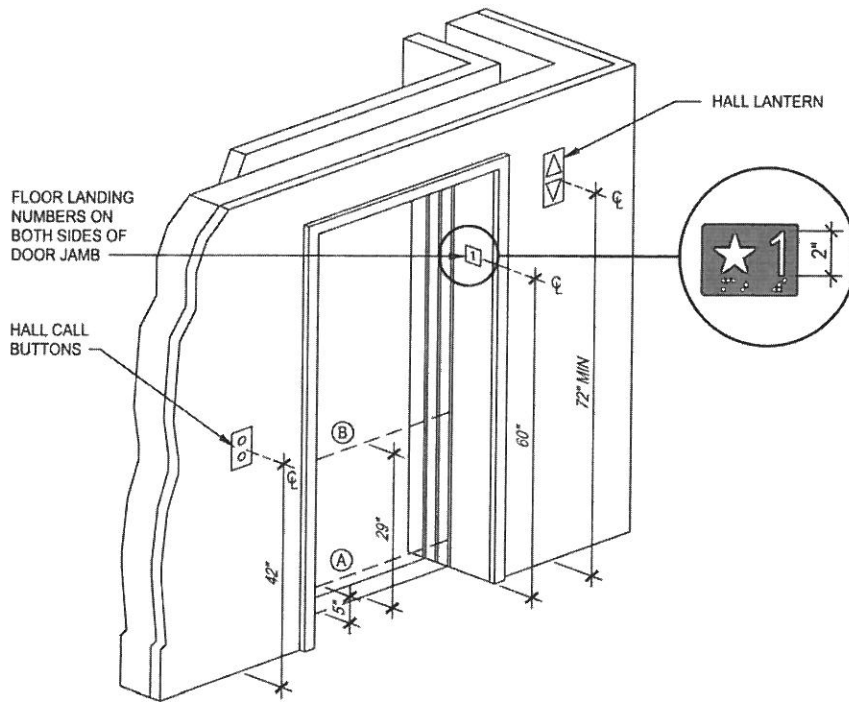
THIS DIAGRAM ILLUSTRATES THE SPECIFIC REQUIREMENTS
OF THESE REGULATIONS AND IS INTENDED ONLY AS AN AID
FOR BUILDING DESIGN AND CONSTRUCTION.

FIGURE 11B-40A—MINIMUM DIMENSIONS OF ELEVATOR CARS



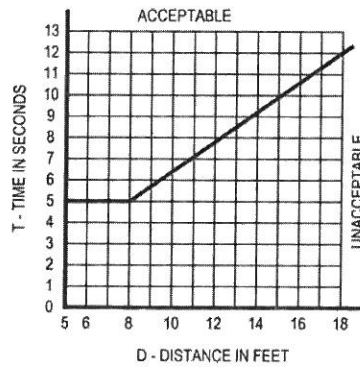
THIS DIAGRAM ILLUSTRATES THE SPECIFIC REQUIREMENTS OF THESE REGULATIONS AND IS INTENDED ONLY AS AN AID FOR BUILDING DESIGN AND CONSTRUCTION.

FIGURE 11B-40B—ELEVATOR CONTROL PANEL



NOTE:
THE AUTOMATIC DOOR REOPENING DEVICE IS ACTIVATED IF AN OBJECT PASSES THROUGH EITHER LINE A OR LINE B. LINE A AND LINE B REPRESENT THE VERTICAL LOCATION OF THE DOOR REOPENING DEVICE NOT REQUIRING CONTACT.

FIGURE 11B-40C—HOISTWAY AND ELEVATOR ENTRANCES



THIS DIAGRAM ILLUSTRATES THE SPECIFIC REQUIREMENTS OF THESE REGULATIONS AND IS INTENDED ONLY AS AN AID FOR BUILDING DESIGN AND CONSTRUCTION

FIGURE 11B-40D—GRAPH OF TIMING EQUATION

SECTION 1117B OTHER BUILDING COMPONENTS

1117B.1 Accessible drinking fountains. Where drinking fountains are provided, they shall comply with this section:

1. **General.** Where only one drinking fountain area is provided on a floor, there shall be a drinking fountain that is accessible to individuals who use wheelchairs in accordance with this section and one accessible to those who have difficulty bending or stooping. This can be accommodated by the use of "hi-low" fountains, or by such other means as would achieve the required accessibility for each group on each floor.

Where more than one drinking fountain is provided on a floor, 50 percent of those provided shall comply with Items 1, 2, 4 and 5 of this section and shall be on an accessible route complying with Section 1114B.1.2. All drinking fountains shall comply with Item 3 of this section.

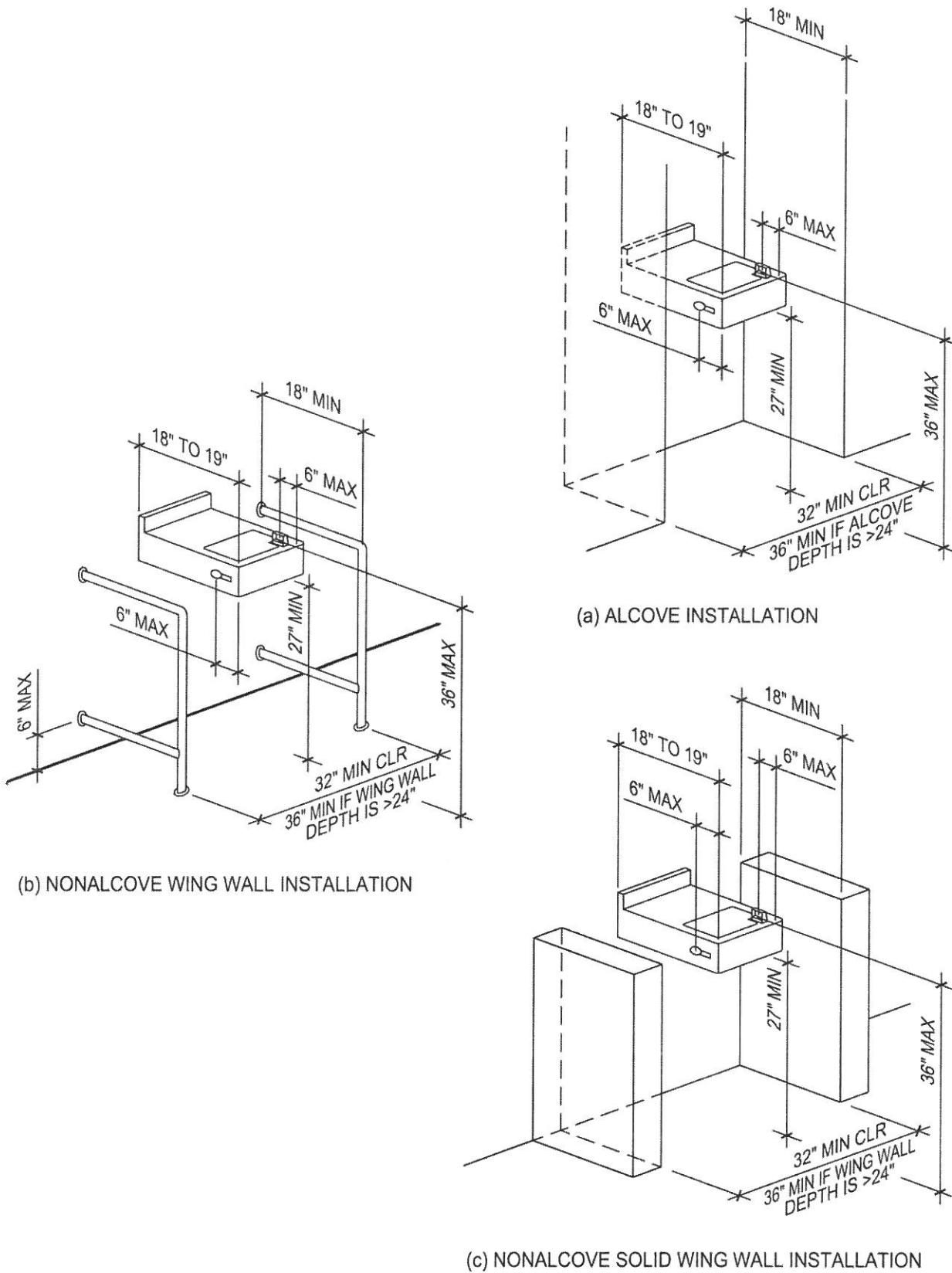
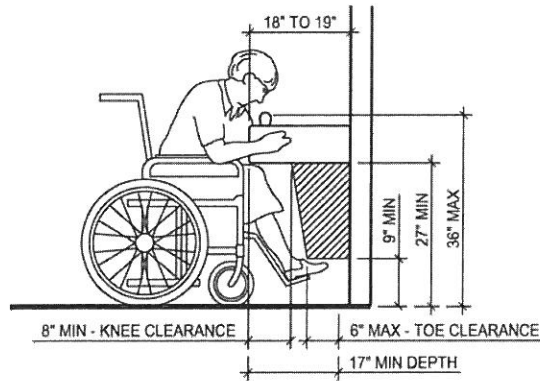


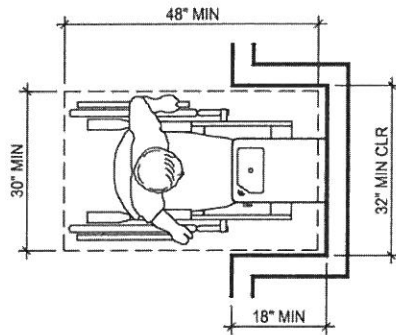
FIGURE 11B-3A—DRINKING FOUNTAINS

(continued)



* EQUIPMENT PERMITTED IN SHADED AREA

SPOUT HEIGHT AND KNEE CLEARANCE AT DRINKING FOUNTAINS

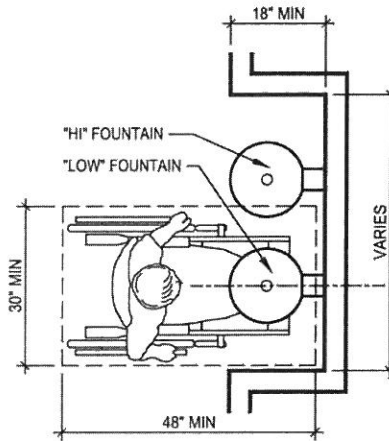


CLEAR FLOOR SPACE AT DRINKING FOUNTAIN ALCOVES

NOTES:

AT ALCOVES DEEPER THAN 24\"/>

AT "HI-LOW" TYPE FOUNTAINS, CENTER THE 30" BY 48" CLEAR FLOOR SPACE ON THE "LOW" FOUNTAIN FIXTURE



CLEAR FLOOR SPACE AT "HI-LOW" DRINKING FOUNTAIN ALCOVES

FIGURE 11B-3B—DRINKING FOUNTAINS—continued

1117B.5 Signs and identification. California's standards for signage are more stringent than Section 4.30 of the ADA Standards for Accessible Design.

1117B.5.1 General. When new or additional signs and/or identification devices are provided, or when existing signs and/or identification devices are replaced or altered, the new or altered signs and/or identification devices shall comply with Section 1117B.5. The addition of or replacement of signs and/or identification devices shall not trigger any additional path of travel requirements.

1. **Identification signs.** When signs identify permanent rooms and spaces of a building or site, they shall comply with Sections 1117B.5.2, 1117B.5.3, 1117B.5.5, 1117B.5.6 and 1117B.5.7. For other means of egress signs and identification provisions adopted by SFM and DSA-AC see [Chapter 10, Sections 1011.3](#) for Tactile Exit Signs, 1022.8 for Floor Identification Signs, 1008.1.9.7 for Delayed Egress Locks, 1007.9, 1007.10 and 1007.11 for Accessible Means of Egress, and 1007.4 for Elevators. See also Section 1116B for additional signage requirements applicable to elevators and Section 1115B.6 for sanitary facilities.

2. **Directional and informational signs.** When signs direct to or give information about permanent rooms and functional spaces of a building or site, they shall comply with Sections 1117B.5.2, 1117B.5.3 and 1117B.5.4.

3. **Accessibility signs.** When signs identify, direct to or give information about accessible elements and features of a building or site, they shall include the appropriate symbol of accessibility and shall comply with Sections 1117B.5.2 and 1117B.5.8.

4. **Plan review and inspection.** Signs and identification as specified in Section 1117B.5.1, when included in the construction of new buildings or facilities, or when included, altered or replaced due to additions, alterations or renovations to existing buildings or facilities, and when a permit is required, shall comply with the following plan review and inspection requirements:

4.1. **Plan review.** Plans, specifications or other information indicating compliance with these regulations shall be submitted to the enforcing agency for review and approval.

4.2. **Inspection.** Signs and identification shall be field inspected after installation and approved by the enforcing agency prior to the issuance of a final certificate of occupancy per Appendix [Chapter 1](#), Section 110.2, or final approval where no certificate of occupancy is issued. The inspection shall include, but not be limited to, verification that Braille dots and cells are properly spaced and the size, proportion and type of raised characters are in compliance with these regulations.

4.3. **Other signs and identification.** Tactile exit signage in [Sections 1011.3](#) and 1011.3.2, tactile floor identification signs in stairways in [Section 1022.8](#), tactile special egress-control device signs in [Section 1008.1.9.7](#), elevator car control identification required in Sections 1116B.1.8 and 1116B.1.9, elevator doorjamb marking required in Section 1116B.1.14, and sanitary facilities signage required in Section 1115B.6 shall also comply with this section.

1117B.6 Controls and operating mechanisms.

1. **General.** Controls and operating mechanisms in accessible spaces, along accessible routes or as parts of accessible elements (for example, light switches and dispenser controls) and those required to be accessible by Section 1.9.1 shall comply with the requirements of this section.

Exception: These requirements do not apply where the use of special equipment dictates otherwise or where electrical and communication systems receptacles are not normally intended for use by building occupants.

4. **Operation.** Controls and operating mechanisms shall be operable with one hand and shall not require tight grasping, pinching or twisting of the wrist. The force required to activate controls shall be no greater than 5 pounds (22.2 N) of force.

5. Installation heights of electrical switches and receptacle outlets.

5.1. **Electrical switches.** Controls and switches intended to be used by the occupant of the room or area to control lighting and receptacle outlets, appliances or cooling, heating and ventilating equipment, shall be located no more than 48 inches (1219 mm) measured from the top of the outlet box nor less than 15 inches (381 mm) measured from the bottom of the outlet box to the level of the finish floor or working platform.

5.2. **Electrical receptacle outlets.** Electrical receptacle outlets on branch circuits of 30 amperes or less and communication system receptacles shall be located no more than 48 inches (1219 mm) measured from the top of the receptacle outlet box or receptacle housing nor less than 15 inches (381 mm) measured from the bottom of the receptacle outlet box or receptacle housing to the level of the finish floor or working platform.

1117B.8 Fitting and dressing rooms. Where fitting or dressing rooms are provided for male or female customers, patients, employees or the general public, 5 percent, but never less than one, of dressings rooms for each type of use in each cluster of dressing rooms shall be accessible and located on an accessible route complying with Section 1114B.1.2. Examples of types of dressing rooms are those serving different genders or distinct and different functions as in different treatment or examination facilities. Where only unisex dressing rooms are provided, accessible unisex dressing rooms may be used to fulfill this requirement.

Entry doors shall conform to the requirements of Section 1133B.2 and aisles leading to such doors shall conform to Sections 1133B.6.1 and 1133B.6.2.

The bottom of mirrors provided for use by persons with disabilities shall not be greater than 20 inches (508 mm) from the floor. Mirrors to be used by persons with disabilities shall be full length, measuring at least 18 inches (457 mm) wide by 54 inches (1372 mm) high, and shall be mounted in a position affording a view to a person on the bench as well as to a person in a standing position.

Clothing hooks shall be located not greater than 48 inches (1219 mm) from the floor.

Every accessible dressing room shall have a 24-inch by 48-inch (610 mm by 1219 mm) bench fixed to the wall along the longer dimension. The bench shall be mounted 17 to 19 inches (432 to 483 mm) above the finish floor. Clear floor space shall be provided alongside the bench to allow a person using a wheelchair to make a parallel transfer onto the bench. The structural strength of the bench and attachments shall comply with Section 1115B.7.2. Where installed in conjunction with showers, swimming pools or other wet locations, water shall not accumulate upon the surface of the bench and the bench shall have a slip-resistant surface.

The minimum clear space within the room shall be 60 inches (1524 mm) in width and length. No door shall encroach into the required space.

SECTION 1122B FIXED OR BUILT-IN SEATING, TABLES AND COUNTERS

1122B.1 Minimum number. Where fixed or built-in seating, tables or counters are provided in accessible public use or common use areas, 5 percent, but never less than one, must be accessible as provided in this section. An accessible route of travel complying with Section 1114B.1.2 shall lead to and through such fixed or built-in seating areas or tables.

1122B.2 Seating. If seating spaces for persons in wheelchairs are provided at fixed tables or counters, clear floor space complying with Section 1118B.4 shall be provided. Such clear floor space shall not overlap knee space by more than 19 inches (483 mm) (see Figure 11B-13).

1122B.3 Knee clearance. If seating for persons in wheelchairs is provided at fixed tables or counters, knee spaces at least 27 inches (686 mm) high, 30 inches (762 mm) wide and 19 inches (483 mm) deep shall be provided (see Figure 11B-13).

1122B.4 Height of work surfaces. The tops of tables and counters shall be 28 inches to 34 inches (711 mm to 864 mm) from the floor or ground.

Where a single counter contains more than one transaction station, such as (but not limited to) a bank counter with multiple teller windows or a retail sales counter with multiple cash register stations, at least 5 percent, but never less than one, of each type of station shall be located at a section of counter that is at least 36 inches (914 mm) long and no more than 28 to 34 inches (711 to 864 mm) high.

1122B.5 Sales and service counters, teller windows and information counters. In department stores and miscellaneous retail stores where counters have cash registers and are provided for sales or distribution of goods or services to the public, at least one of each type shall have a portion of the counter which is at least 36 inches (915 mm) in length with a maximum height of 34 inches (864 mm) above the finish floor and located on an accessible route complying with Section 1114B.1.2.

At ticketing counters, teller stations in a bank, registration counters in hotels and motels,

box office ticket counters and other counters that may not have a cash register but at which goods or services are sold or distributed, a portion of the main counter which is a minimum of 36 inches (915 mm) in length shall be provided with a maximum height of 34 inches (864 mm).

SECTION 1123B ACCESS TO EMPLOYEE AREAS

1123B.1 General. Employee areas shall comply with the accessibility requirements of this chapter.

1123B.2 Work stations. Specific work stations need only comply with aisle width (Sections 1133B.6.1 and 1133B.6.2) and floors and levels (Section 1120B), and entryways shall be 32 inches (813 mm) in clear width.

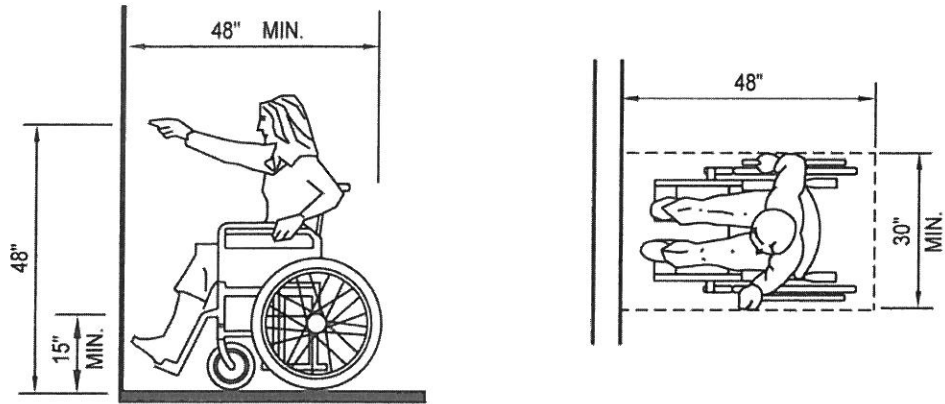
SECTION 1125B STORAGE

1125B.1 General. If fixed storage facilities such as cabinets, shelves, closets or drawers are provided where access is required by Section 1.9.1, at least one of each type shall comply with this section. Additional storage may be provided outside of the reach ranges shown in Figure 11B-5D.

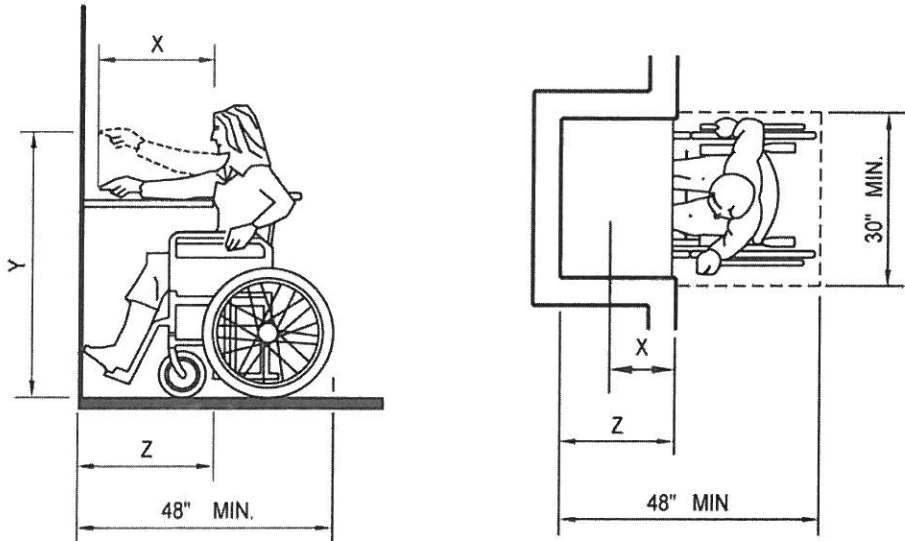
Next Week

Tue 11/01 - Exam 6, In-Class Assignment 2 (bring measuring tape, sketch paper, clipboard), Assignment 2 Given

Thu 11/03 - Interior Environment, pg 231-242/Review of In-Class Assignment 2



(a) HIGH FORWARD REACH LIMIT

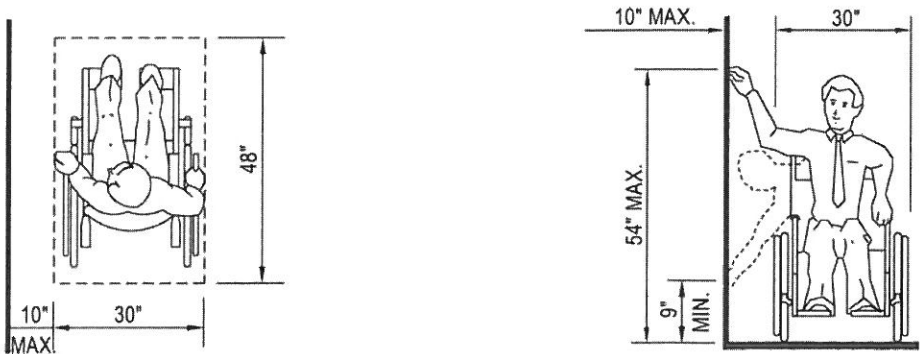


NOTE :
 X SHALL BE LESS THAN OR EQUAL TO 25 INCHES. Z SHALL BE GREATER THAN OR EQUAL TO X. WHEN X IS LESS THAN 20 INCHES, THEN Y SHALL BE 48 INCHES MAXIMUM. WHEN X IS 20 TO 25 INCHES, THEN Y SHALL BE 44 INCHES MAXIMUM.

(b) MAXIMUM FORWARD REACH OVER AN OBSTRUCTION

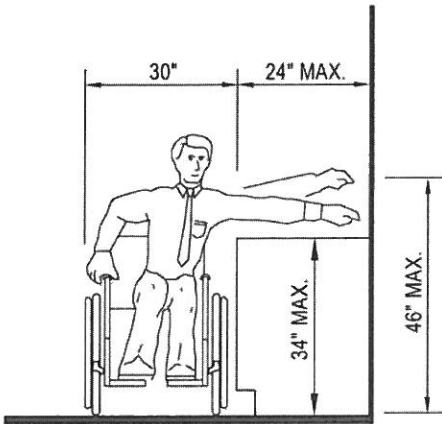
THESE DIAGRAMS ILLUSTRATE THE SPECIFIC REQUIREMENTS OF THESE REGULATIONS AND ARE INTENDED ONLY AS AN AID FOR BUILDING DESIGN AND CONSTRUCTION

FIGURE 11B-5C—FORWARD REACH

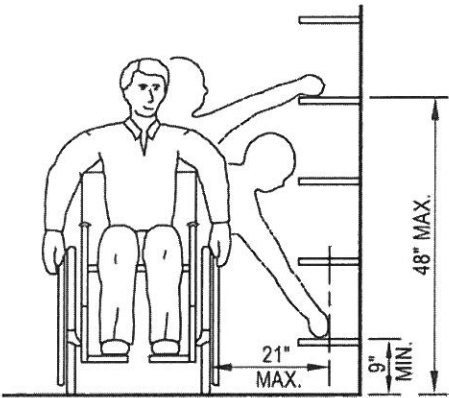


(a) CLEAR FLOOR SPACE PARALLEL APPROACH

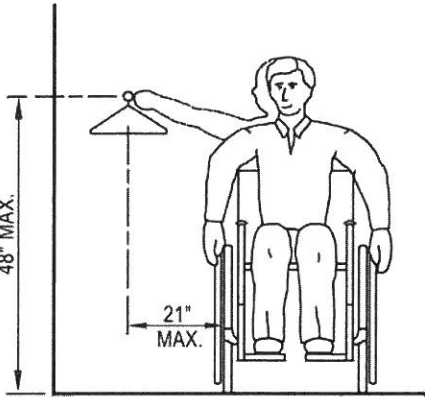
(b) HIGH AND LOW SIDE REACH LIMITS



(c) MAXIMUM SIDE REACH OVER OBSTRUCTION



(d) SHELVES



(e) CLOSETS

THESE DIAGRAMS ILLUSTRATE THE SPECIFIC REQUIREMENTS OF THESE REGULATIONS AND ARE INTENDED ONLY AS AN AID FOR BUILDING DESIGN AND CONSTRUCTION

FIGURE 11B-5D—SIDE REACH

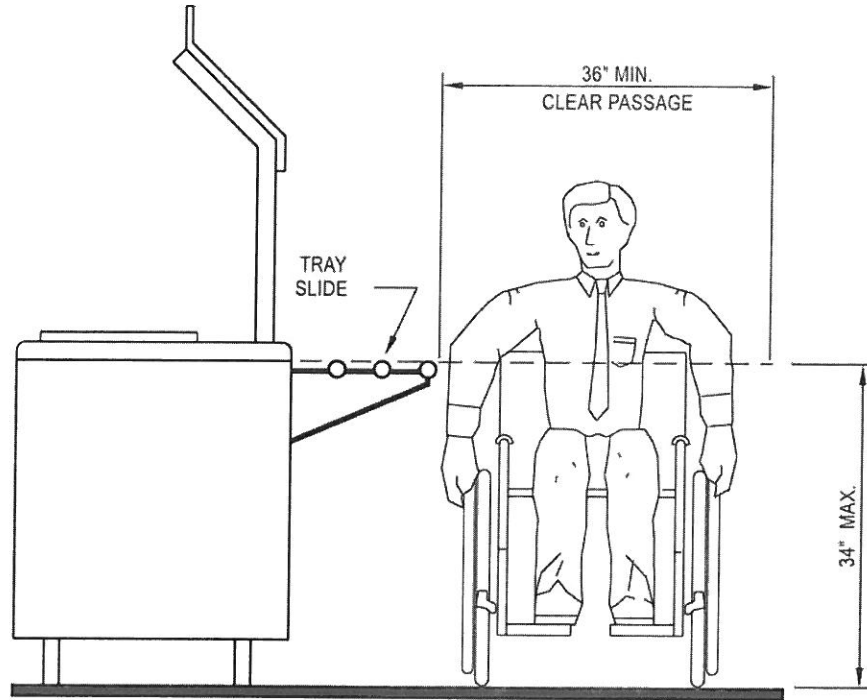
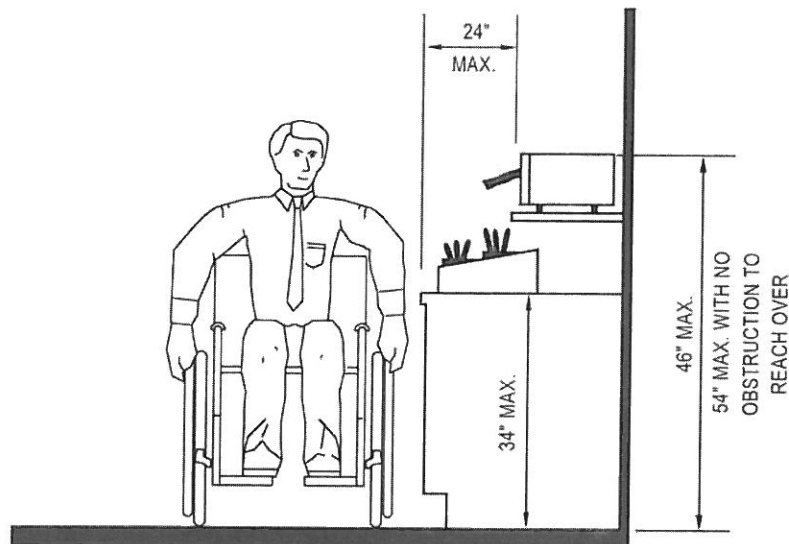


FIGURE 11B-16—FOOD SERVICE LINES



THESE DIAGRAMS ILLUSTRATE THE SPECIFIC REQUIREMENTS OF THESE REGULATIONS AND ARE INTENDED ONLY AS AN AID FOR BUILDING DESIGN AND CONSTRUCTION.

FIGURE 11B-17—TABLEWARE AREAS