

PROJECT DESCRIPTION

The Riggs-Pudson Funeral Home has purchased a historic Tudor-style church situated in the mountains. Mr. Riggs is a licensed funeral director, and his wife is a successful florist. The east wing of the church will be renovated for day-to-day business operations. You have been hired to design the 3,851 sq. ft. (357.8 sq. m.) funeral home to include an administrative suite, retail space, and residential suite for the Riggs.

The **administrative suite** will include:

- Reception Area
- Director's Office
- Family Counseling Room
- Supply Room

The **retail space** will include:

- Flower Shop
- Shipping and Receiving Area
- Storage Room
- Product Display
- Accessories Display
- Catalog Storage

The **residential suite** will include:

- Living Area
- Kitchen
- Bedroom
- Bathroom
- Half Bathroom
- Laundry Room

The administrative suite must be directly adjacent to the entry vestibule. The Reception Area must be directly adjacent to the Director's Office. The Family Counseling Room must be acoustically separated from the rest of the administrative suite. Because the funeral director often works during off hours, there must be a connecting door between the Director's Office and the residential suite.

The Riggs will use the retail space to provide their clients with the option of purchasing all of the needed materials, including caskets, clothing, flowers, and personal accessories. The retail space must be conveniently accessible to the Director's Office. The Flower Shop must be directly adjacent to the Shipping and Receiving Area. The Shipping and Receiving Area must be directly adjacent to the delivery driveway. Space limitations do not allow for full-size casket displays; therefore, the Riggs will use a tiered system to display sections of caskets.

A private entrance to the residential suite must be located on the east wall of the building. At minimum a 1hr rated and acoustical separation is required between the residential suite and the rest of the building. The Living Area must be directly adjacent to the Kitchen. The Bedroom must be conveniently adjacent to the Bathroom. The Half Bathroom must be acoustically separated from the rest of the residential suite and must share a plumbing wall with the Bathroom.

The building is a wood, stucco, and brick structure that is classified as mixed use, Group R (residential) [Canadian Group C], Group M (mercantile) [Canadian Group E], and Group B (business) [Canadian Group D]. GWB at 24'-0" (7,315 mm) are throughout the space. The plenum height is 32'0" (9,754 mm) AFF at the roof peak. The windowsill heights are 34" (864 mm) AFF throughout the space. The building has a sprinkler system, and the HVAC is provided by a traditional hot-water system with cast iron radiators. The radiators may be removed where necessary. All plumbing fixtures, including the fittings and drains of the fixtures, must be within 15'-0" (4,572 mm) of the plumbing access line.

Additional exterior building penetrations are permitted through existing window openings only.

GENERAL DESIGN REQUIREMENTS

1. **ALL** furniture, fixtures, and equipment (FF&E) listed in the project design requirements **MUST** be incorporated into your *Floor Plan* drawn on sheet V-3.
2. Where furnishings are **NOT** specified, you are **NOT** required to include FF&E.
3. Your *Floor Plan* may be freehand sketch technique (to scale) or in drafted format. Your *Floor Plan* **MUST** be drawn directly on sheet V-3. **No trace paper will be scored.**
4. **ALL** rooms **MUST** meet the minimum square footage (square meters) indicated in the project design requirements.
5. Draw and label **ALL** rooms with room name and minimum area, adhering to **ALL** adjacencies as described in the *Project Description*.
6. Label **ALL** required operable windows.
7. Draw **ALL** walls, doors, door swings, and other components that are part of your *Floor Plan*, and include **ALL** the *Project Code Requirements*.
8. Draw and label **ALL** exits/egress doors.
9. Label **ALL** square footage (square meters) and **ALL** lineal footage (lineal meters) as noted in the *Project Design Requirements*.
10. Label **ALL** FF&E.
11. Coat closets **MUST** have a minimum interior depth of 2'-0" (610 mm).
12. All wall thicknesses **MUST** be graphically indicated.
13. Plumbing walls **MUST** be indicated in all spaces that have plumbing fixtures.

PROJECT DESIGN REQUIREMENTS ADMINISTRATIVE SUITE

Room Name	Minimum Area	Furnishings	Dimensions (W x D x H)	Notes
Reception Area	175 s.f. (16.1 s.m.)	Reception desk	72" x 36" x 29" (1,829 mm x 914 mm x 737 mm)	Freestanding
		Task chair		
		Two (2) lateral files	36" x 18" x 54" (914 mm x 457 mm x 1,372 mm) each	Four (4) drawers each
Director's Office	250 s.f. (23 s.m.)	Desk with return	desk – 72" x 36" x 29" (1,829 mm x 914 mm x 737 mm) return – 48" x 24" x 29" (1,219 mm x 610 mm x 737 mm)	
		Task chair		
		Two (2) guest chairs		
		Credenza	72" x 20" x 29" (1,829 mm x 508 mm x 737 mm)	
		Bookcase	36" x 15" x 48" (914 mm x 381 mm x 1,219 mm)	
Family Counseling Room	135 s.f. (12.4 s.m.)	Meeting table	48" diameter x 29" (1,219 mm x 737 mm)	
		Four (4) chairs		
		Credenza	60" x 20" x 29" (1,524 mm x 508 mm x 737mm)	
Supply Room	150 s.f. (13.8 s.m.)			

RETAIL SPACE

Room Name	Minimum Area <small>BLANK INDICATES NO GIVEN SIZE</small>	Furnishings	Dimensions (W x D x H)	Notes
Flower Shop		Parallel work counters	25 lineal feet (7.6 lineal m) minimum total length	Single bowl sink
Shipping and Receiving Area	275 s.f. (25.3 s.m.)			
Storage Room	150 s.f. (13.8 s.m.)	Shelving	15 lineal feet (4.6 lineal m minimum)	
Product Display	200 s.f. (18.4 s.m.)	Casket display	20 lineal feet x 24" x 60" (3,048 mm x 610 mm x 1,524 mm) minimum	
		Urn display shelving	10 lineal feet x 18" x 60" (1,524 mm x 457 mm x 1,524 mm) minimum	
Accessories Display		Clothing display	8 lineal feet (2.4 lineal m)	
Catalog Storage	90 s.f. (8.3 s.m.)	Two (2) storage cabinets	42" x 24" x 72" (1,067 mm x 610 mm x 1,829 mm) each	

PROJECT DESIGN REQUIREMENTS (continued) RESIDENTIAL SUITE

Room Name	Minimum Area <small>BLANK INDICATES NO GIVEN SIZE</small>	Furnishings	Dimensions (W x D x H)	Notes
Living Area	270 s.f. (24.8 s.m.)	Three-seat sofa	84" x 36" x 32" (2,133 mm x 914 mm x 813 mm)	
		Lounge chair	36" x 36" x 32" (914 mm x 914 mm x 813 mm)	
		TV cabinet	60" x 21" x 72" (1,524 mm x 533 mm x 1,829 mm)	
		Coffee table	30" diameter x 16" (762 mm x 406 mm)	
Kitchen		Upper and lower cabinets	12 lineal feet (3.7 lineal m) minimum each	Single bowl sink
		Dining table	48" diameter x 29" (1,219 mm x 737 mm)	With four (4) chairs
Bedroom	225 s.f. (21 s.m.)	Queen bed	60" x 80" (1,524mm x 2,032 mm)	
		Two (2) night tables	20" x 15" x 20" (508 mm x 381 mm x 508 mm) each	
		Dresser	72" x 20" x 32" (1,829 mm x 508 mm x 813 mm)	
		Closet	8 lineal feet (2.4 lineal m minimum)	
Bathroom		Accessible (barrier-free) toilet		
		Accessible (barrier-free) counter	36" x 22" x 34" (914 mm x 558 mm x 864 mm)	With sink
		Accessible (barrier-free) tub/shower combination	60" x 30" (1,524 mm x 762 mm)	60" x 30" (1,524 mm x 762 mm) clear space required in front of tub/shower combination
		Grab bars		
Half Bathroom	50 s.f (4.6 s.m.)			
Laundry Room	70 s.f. (6.4 s.m.)			

Instructions To Candidates

- ◆ Using the Project Description in the test booklet, complete the Adjacency Matrix to the right.
- ◆ Place a closed or open circle (as indicated) in the square that represents the intersection of the adjacencies.
- ◆ Not all rooms are included in the adjacency matrix.

ADJACENCY MATRIX

- Convenient / Secondary Adjacency
- Direct / Primary Adjacency

	Bathroom	Bedroom	Kitchen	Living Area	Delivery Driveway	Shipping and Receiving Area	Flower Shop	Retail Space	Residential Suite	Director's Office	Reception Area	Entry Vestibule	Administrative Suite
Administrative Suite													/
Entry Vestibule												/	
Reception Area											/		
Director's Office										/			
Residential Suite									/				
Retail Space								/					
Flower Shop							/						
Shipping and Receiving Area						/							
Delivery Driveway					/								
Living Area				/									
Kitchen			/										
Bedroom		/											
Bathroom	/												

9.7/3M

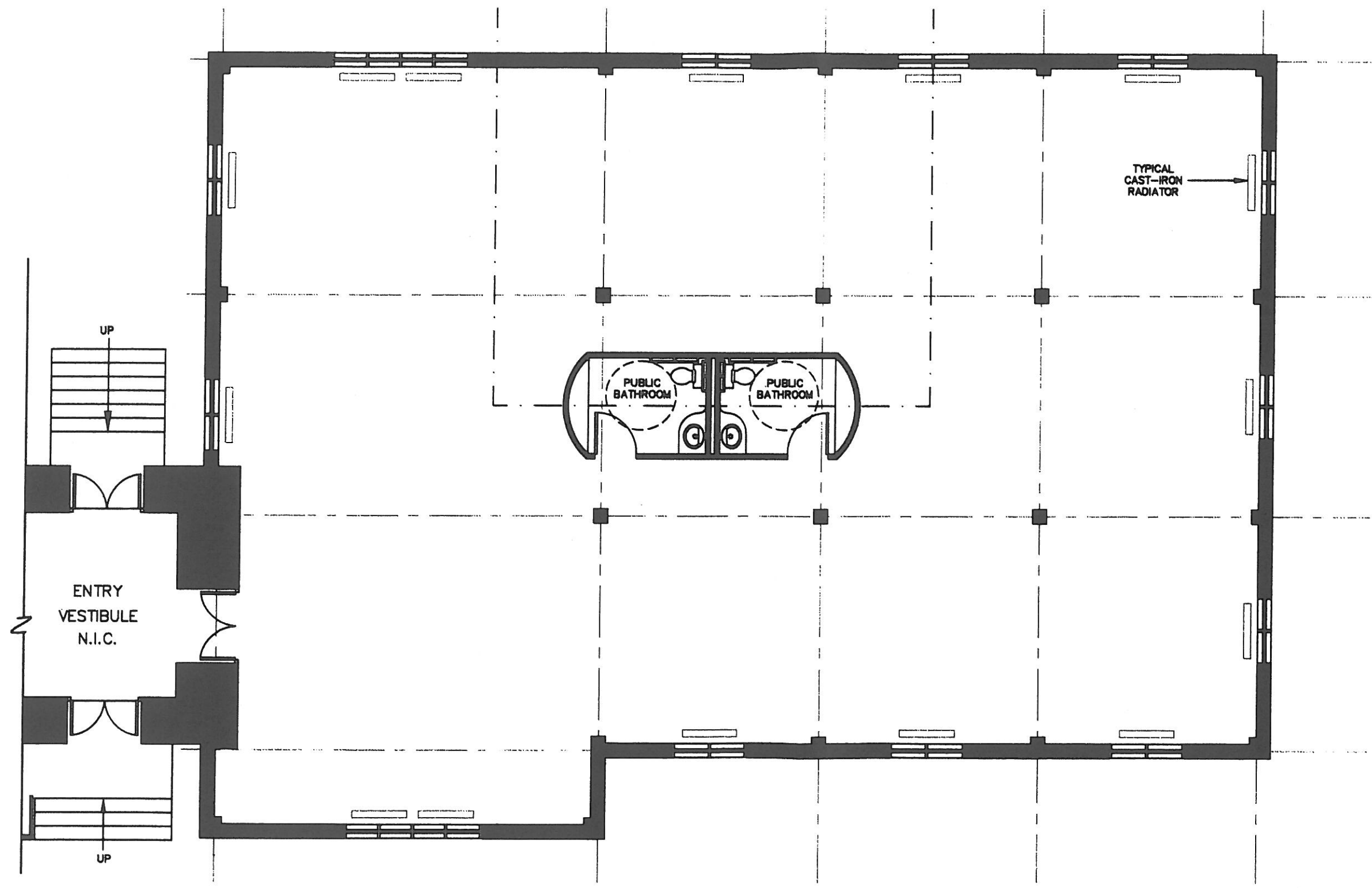
SHEET
SCALE
CONT

SEE TEST BOOKLET FOR INSTRUCTIONS TO CANDIDATES

LEGEND

- Plumbing Line
- - - Column Line
- ⊗ Wall Type (X = wall type designation)

(See ID-4 for wall type details)



FLOOR PLAN

**RIGGS-PUDSON
FUNERAL HOME
P010**

SHEET: **V-3**

SCALE: **1/8" = 1'-0" (approx. 1:100)**

CONTROL NUMBER:

--	--	--	--	--	--	--	--	--	--

