

NOTE: ALL WOOD 22 FOOT LENGTH TO BE ENGINEERED WOOD AND ORDERED AT LEAST 6 BUSINESS DAYS IN ADVANCE FROM BERONIO LUMBER.

window screen staple neatly to 2 x 6 frame top and bottom align screen to the edges of the wood frame - leave no wood exposed

tighten wood against straw with washer and nut on all thread

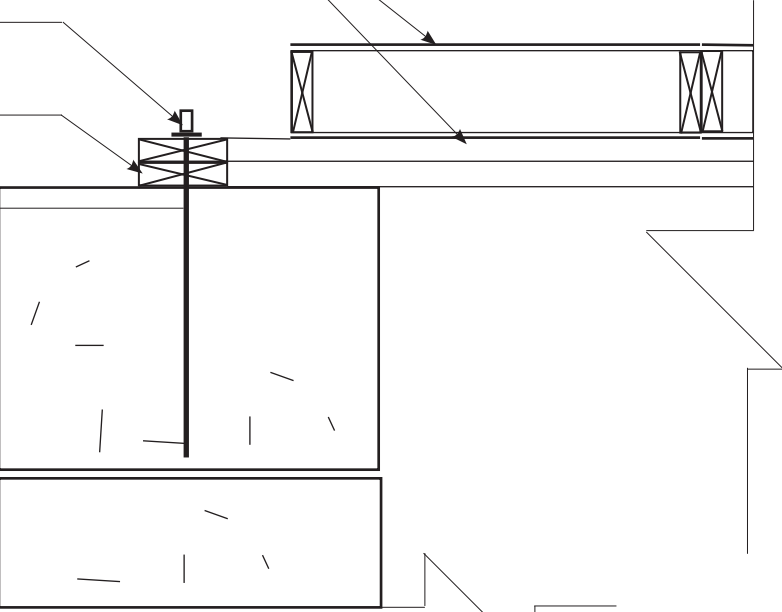
(2) 2 x 6 bond beam use engineered lumber

1/2" dia. x 18" all thread rod fastens bondbeam to straw bale approximately every 4' (1 per bale)

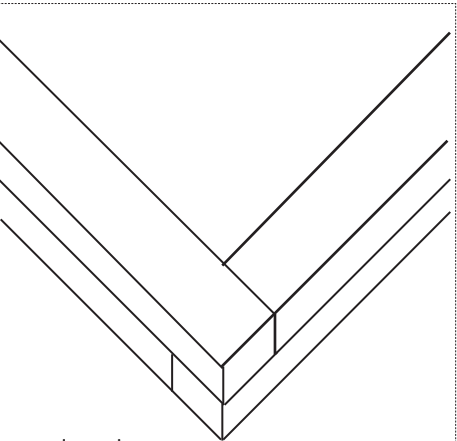
steel corner bracket screw in as needed

(2) 2 x 6 bond beam

overlap corners of bond beam (see enlarged detail)



Section 1



BOND BEAM ASSEMBLY

window screen staple neatly to 2 x 6 frame top and bottom - align screen to the edge of the wood frame - leave no wood exposed

"L" bracket - screw bracket to bondbeam and cross beam approximately every 4'

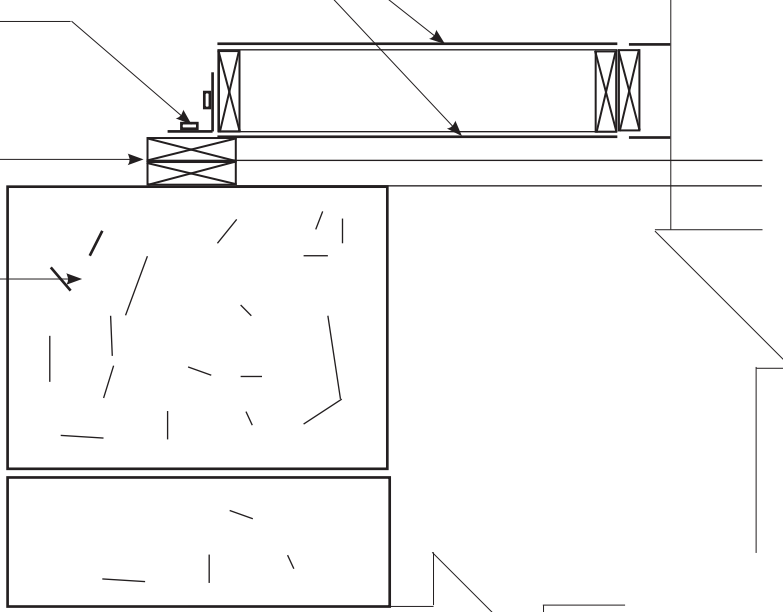
(2) 2 x 6 bond beam use engineered lumber

straw bale

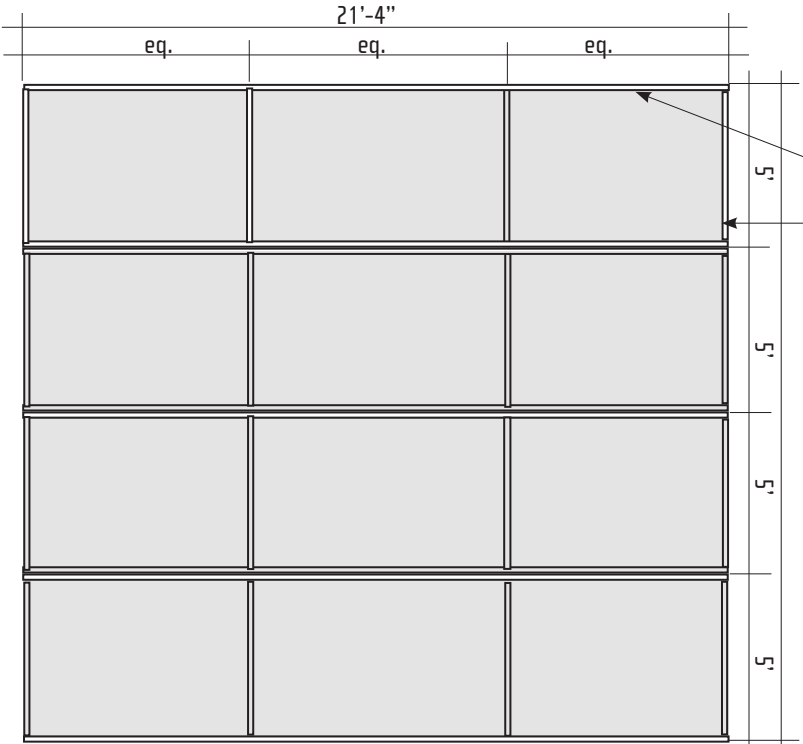
2 x 6 cross beam (engineered lumber)
2 x 6 infill beam (engineered lumber)

Screw beams together to make 21'-4" x 5' frames. Frames will be placed on top of bond beam and attached with metal brackets - see section 2 for details.

charcoal aluminum window screen may be purchased at www.qualitywindowsscreen.com in 5' rolls wide by 100' long rolls. 2 rolls are required. Cut lengths to fit and NEATLY staple to cross beams top and bottom sides.



Section 2



CEILING ASSEMBLY