

Installation of the Rigging Master Course

Welcome to the Rigging Master Course, we hope you will enjoy it. There are two ways to 'install' the series for easy access. Once you have downloaded the six parts and assembled them into the videos folder, the entire "RiggingMasterCourse" folder can be moved into the modo configuration folder. Users can access this folder directly using the menu bar command "System -> Open User Configs Folder". The folder locations by default are located at--

Windows XP

{Drive}\Documents and Settings\{login name}\Application Data\Luxology\Configs

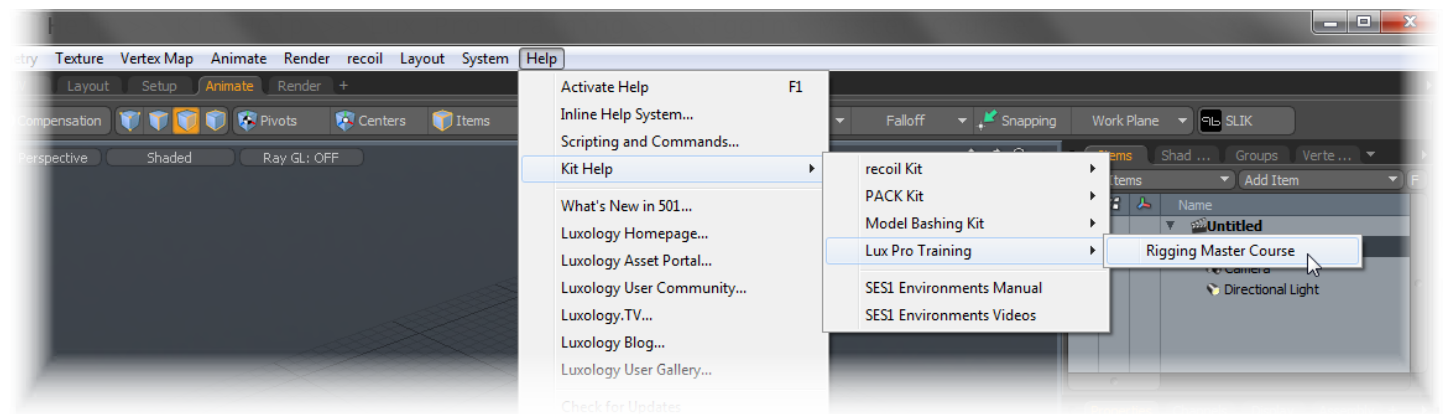
Windows Vista/7

{Drive}\Users\{login name}\AppData\Roaming\Luxology\Configs

Mac OSX (hidden by default in OSX Lion)

{Drive}\Users\{username}\Library\Application Support\Luxology\Configs

Once it has been copied there, it will be accessible from the modo help menu under--



Of course for users who would prefer not to install the folder into that location, you can also simply copy the folder anywhere you wish and create a shortcut to the file "{disc location}\RiggingMasterCourse\index.html" in the browser of your choice.

Known Issues: Since the training is interactive, a number of scripts are utilized to facilitate the navigation structure. Unfortunately most browsers frown upon locally run scripts (those that execute from your local hard drive) because of possible security risks from unscrupulous websites, so you may need to disable warning messages related to the training. Furthermore Internet Explorer doesn't recognize the script necessary to activate the embedded chapter markers links for the videos. The rest of the training works fine in IE otherwise. For best results it is recommended that users use one of the alternative browsers, such as Firefox, Chrome, Safari or Opera. This training has been tested to work satisfactorily in all the above mentioned browsers. If you have any questions, please join our discussion forum at-

<http://forums.luxology.com/discussion/topic.aspx?id=60012>