

08691

BCM Motherboard Assembly & Set Up Procedure

Rev E

Equipment Required:

- Desktop case w/power supply, 3 ½ Floppy drive and hard drive.
- PC Keyboard
- PC Monitor
- Detachable power cord

Parts required for this assembly: see PL#06860

Reference Documentation: BCM BC845DL/FX815ELT/RX815ELT Manuals and Drivers Ver: 1.00 CD

Important Note:

All of these components are static sensitive. Use static control precautions at **ALL** times. This includes using a static dissipating work surface, wrist straps, and making sure that everything is grounded together before taking any component out of it's packaging. In addition, completed assemblies should be re-packaged before removing them from the static control area or installed directly into a printer.

Power up the assembly:

- Plug the power cord into the power supply.
- Use the power push button to turn the system on.
- Verify that the CPU fan runs immediately, do not proceed if the CPU fan does not run.

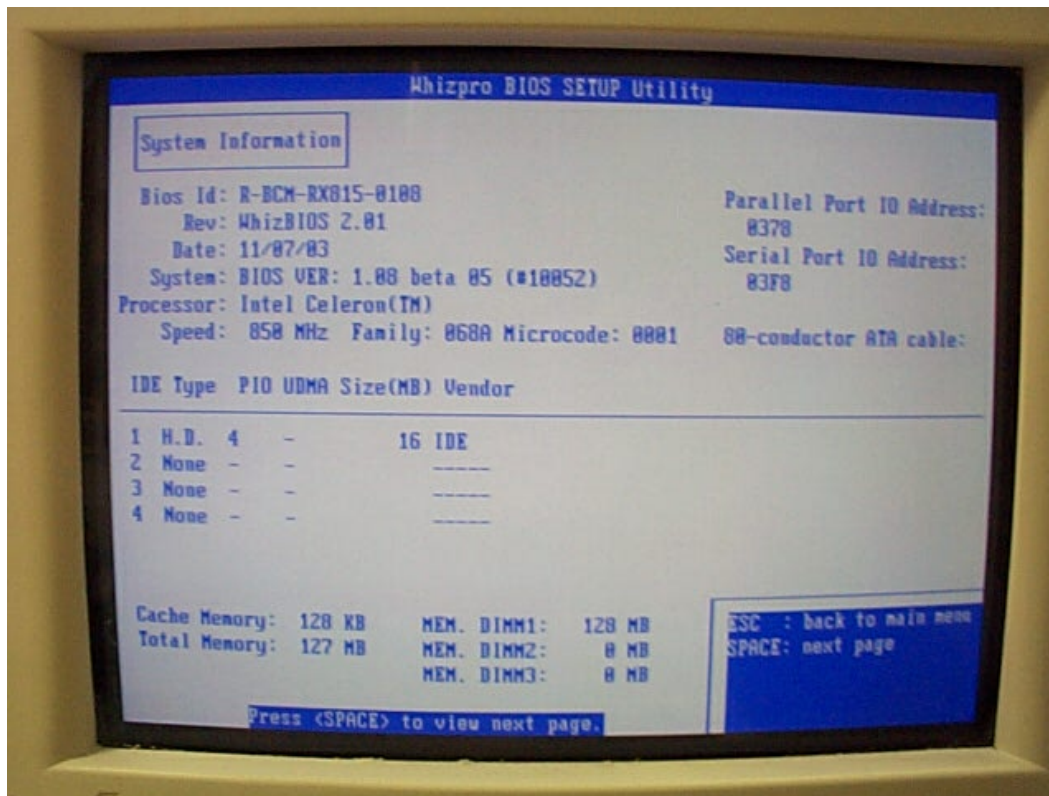
Setting up the BIOS:

When the boot message shows on the monitor, press <<F2>> to drop into the main BIOS setup menu. Choose <<F9 : Load default CMOS settings>>. Confirm the choice as necessary. <<ESC>> to return to the main menu. The following changes assume the BIOS defaults have been loaded.

System Information page:

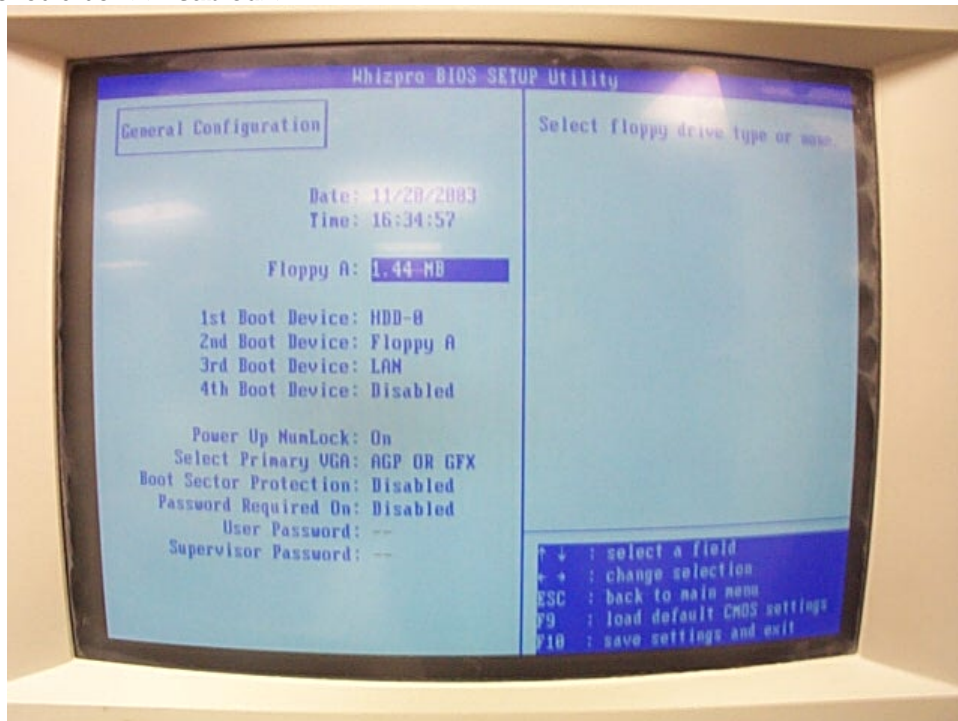
Make sure **BIOS version** is current. This can be checked on bcmcom.com webpage. If the BIOS version needs to be updated see Appendix A. Confirm CPU speed <<850 MHz>> & type <<Intel(R) Celeron(TM)>>. Confirm that in Memory DIMM1 <<128Mb >> is detected.

In this example the Primary Master has detected a 16MB Flash Drive. Hard drive information will vary depending on which type of hard disk is used for the setup procedure.



General Configuration page:

Verify and if necessary correct System Time & Date. Change the order of the boot devices as shown.. 1st boot device should be <<HDD- 0>>. 2nd device should be <<Floppy A>>. 3rd device should be <<LAN>>. 4th device should be <<Disabled>>.



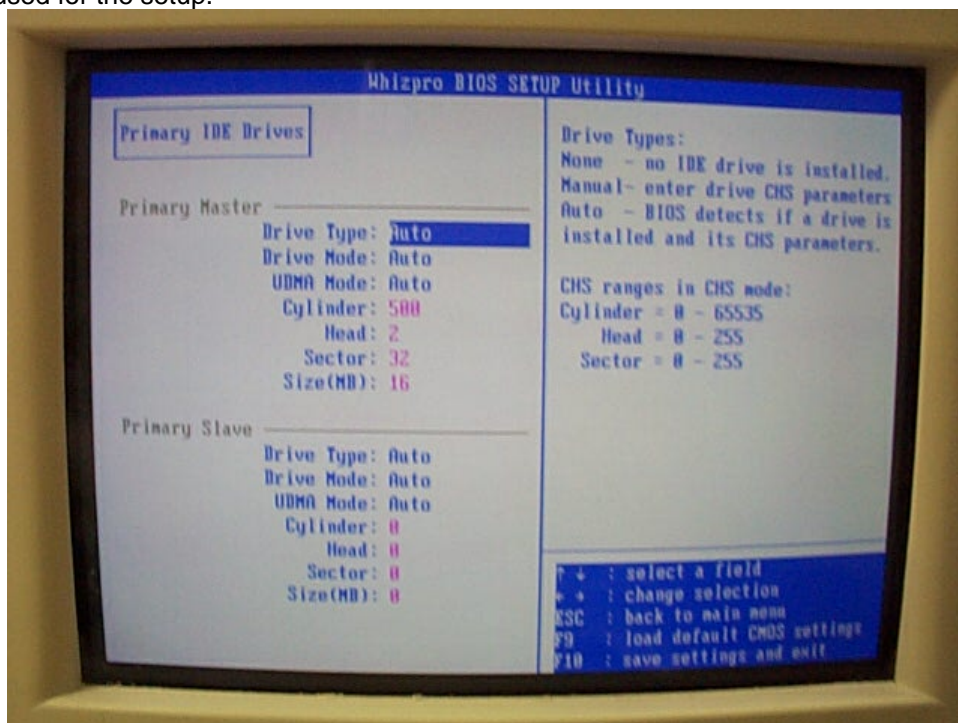
Advanced Configuration:

Confirm On Board LAN is <<Enabled>>. LAN Boot ROM is <<Disabled>>.



Primary & Secondary IDE Drives pages:

Confirm Drive Type, Drive Mode, & UDMA Mode are all <<Auto>>. In this example the Primary Master has detected a 16MB Flash Drive. Cylinders, heads, sectors & size will vary depending on which type of hard disk is used for the setup.



Peripherals settings page:

If the motherboard will be used in a Z310+ (Refer to Figure 1):

Confirm Floppy Controller, USB, Audio, & Game Ports are <<Disabled>>.

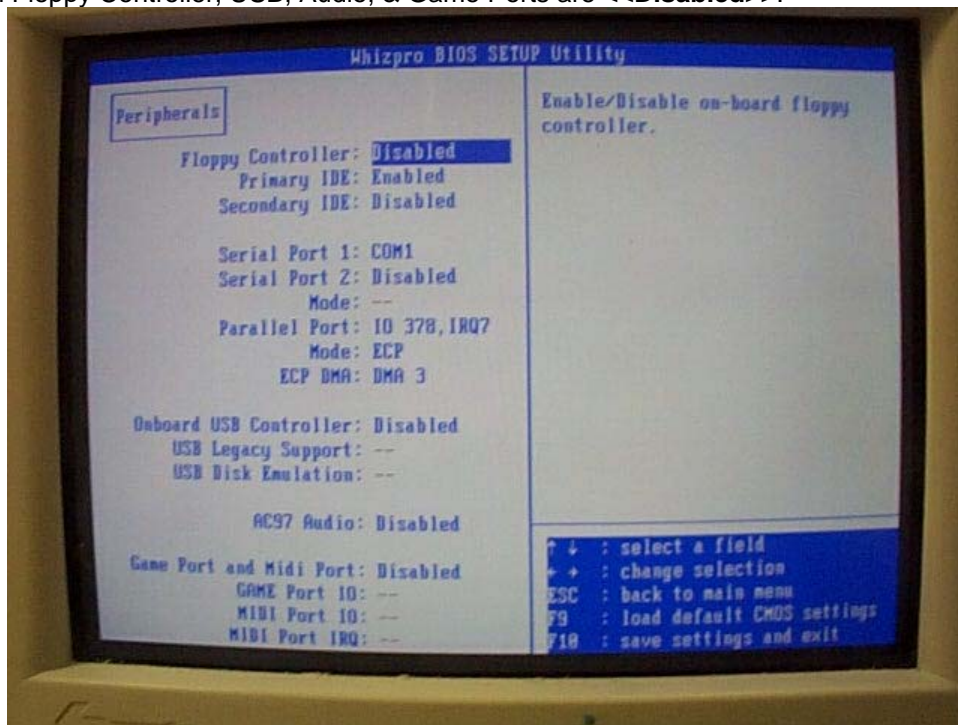


Figure 1. Peripheral Settings for a Z310+

If the motherboard will be used in a Z406T2 (Refer to Figure 2):

Confirm Floppy Controller, USB, Audio, & Game Ports are <<Disabled>> and both serial ports are enabled.

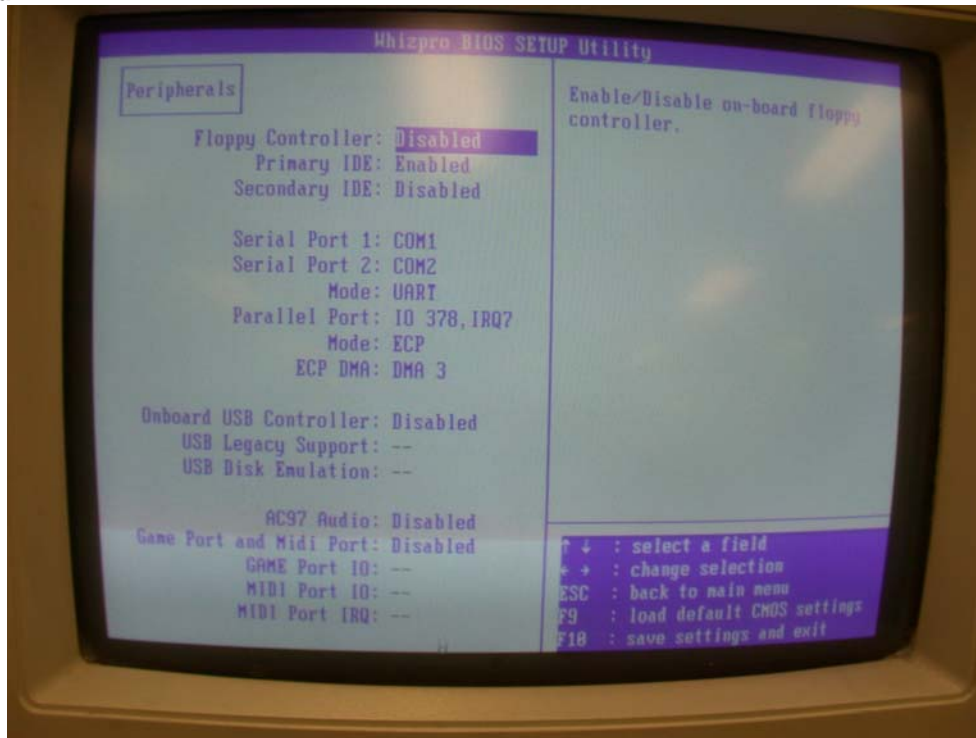
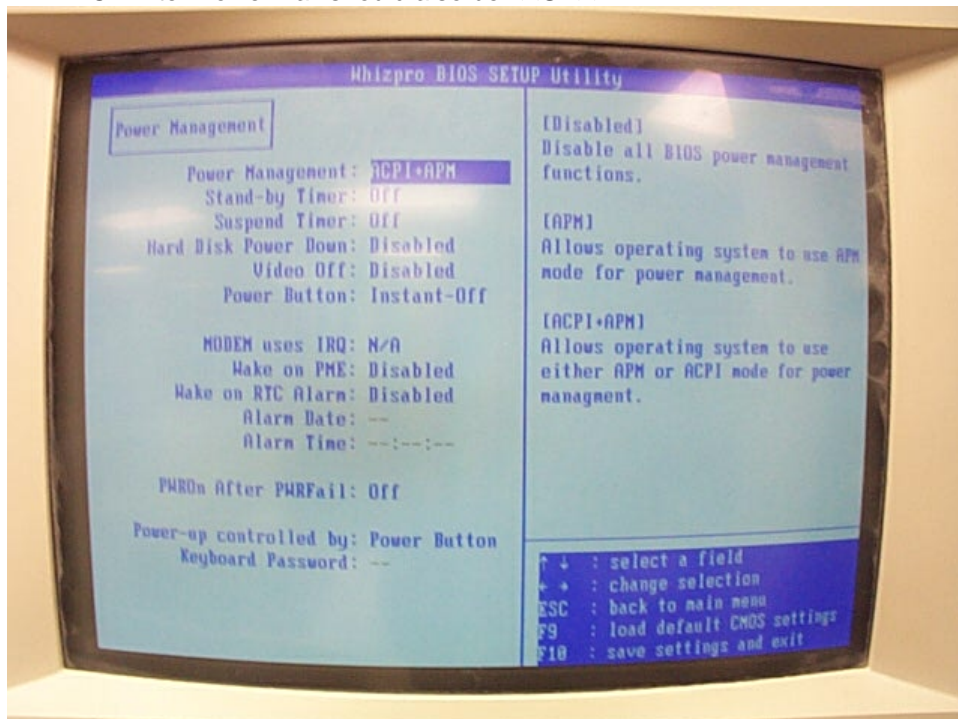


Figure 2. Peripheral settings for a Z406T2

Power settings page:

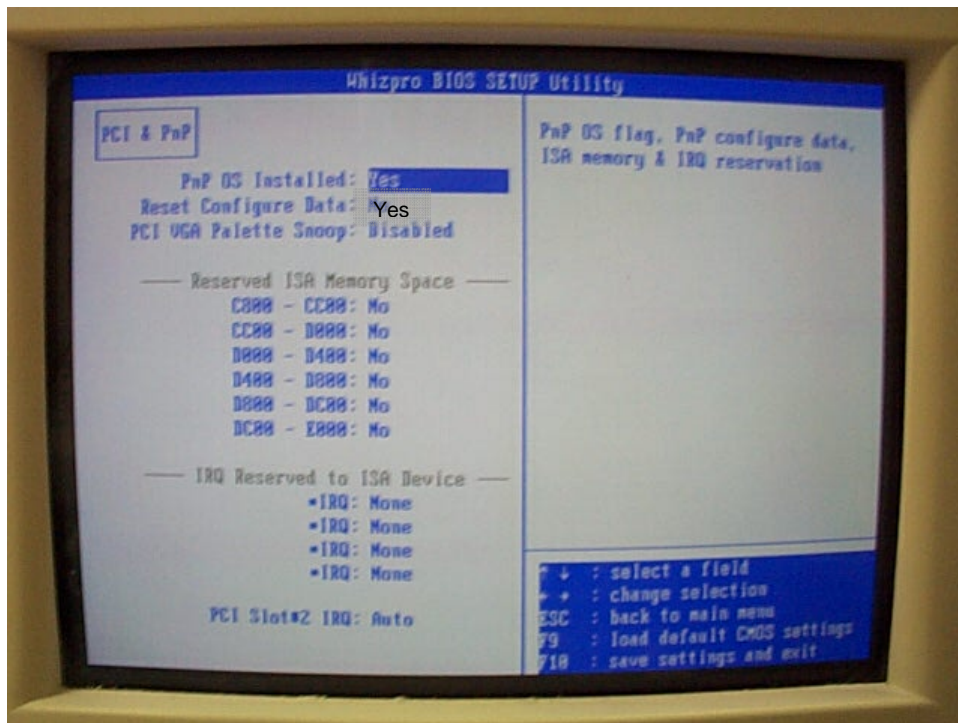
Confirm that Power Management is <<ACPI +APM>>, Standby Timer is <<Off>> and Suspend Timer is <<Off>>. PWROn After Power Fail should also be <<Off>>.



PCI & Pnp settings page:

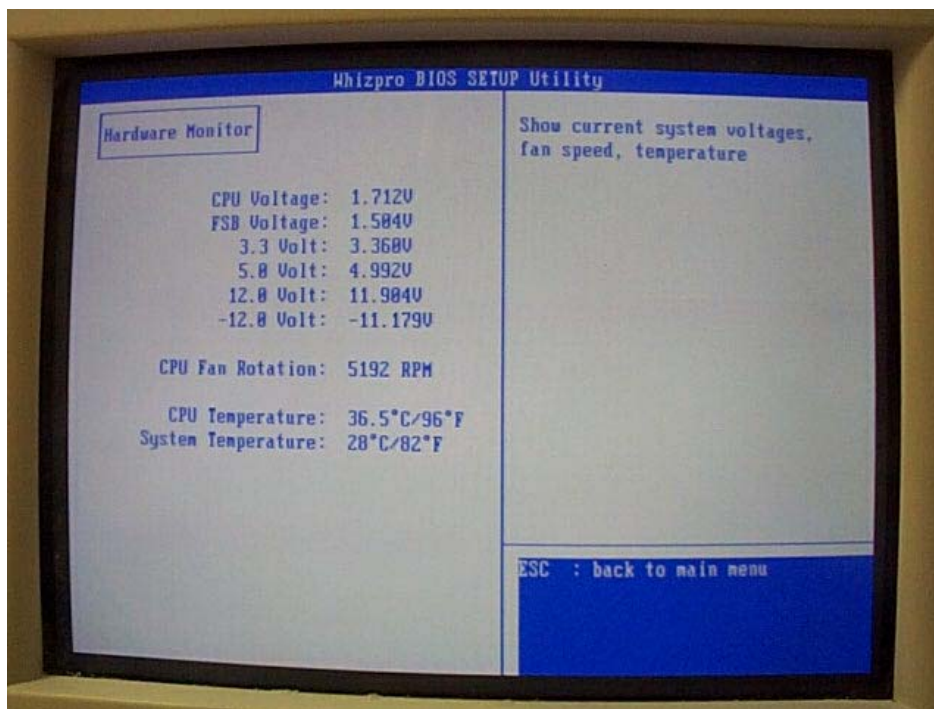
Confirm that the PCI & PnP options are the defaults as shown on the following screen example.

Note that "reset configure data" gets set to "yes". When you see this later it will be back to "no". This is fine.



Hardware Monitor page:

Confirm that the CPU voltage is 1.7V and the FSB voltage is 1.5V. Fan is approx. 5000 RPM.



Exit and Save the Settings:

Use the ESC key to return to the main menu. Select **<<F10 : Exit Saving Changes>>** option to Save the new settings and Exit the CMOS setup program; press enter to confirm that you want to save the CMOS settings that you have selected. The system should re-boot.

Revision History

Rev A - original release 12/03/2003
Rev B - changed BIOS setting for LAN boot ROM 01/26/04
Rev C - added separate peripheral settings for Z406T2 08/06/04
Rev D - ECN 1636 BWH 11/3/05
Rev E - ECN 1777 RWM 06/29/06 changed parts list to 06860; change Zprinter310 to Z310+

Author: K. Roche
Approved by: J. Kinsley

Information contained in this document is the confidential property of Z Corporation. Recipient shall not disclose such Information to any third party, and shall not use it for any purpose whatsoever other than to price or provide services to Z Corporation.

© Z Corporation 1995-2004. All rights reserved.